

**Division of Data Governance**

*Dr. Debbie Durrence, Chief Data Officer*

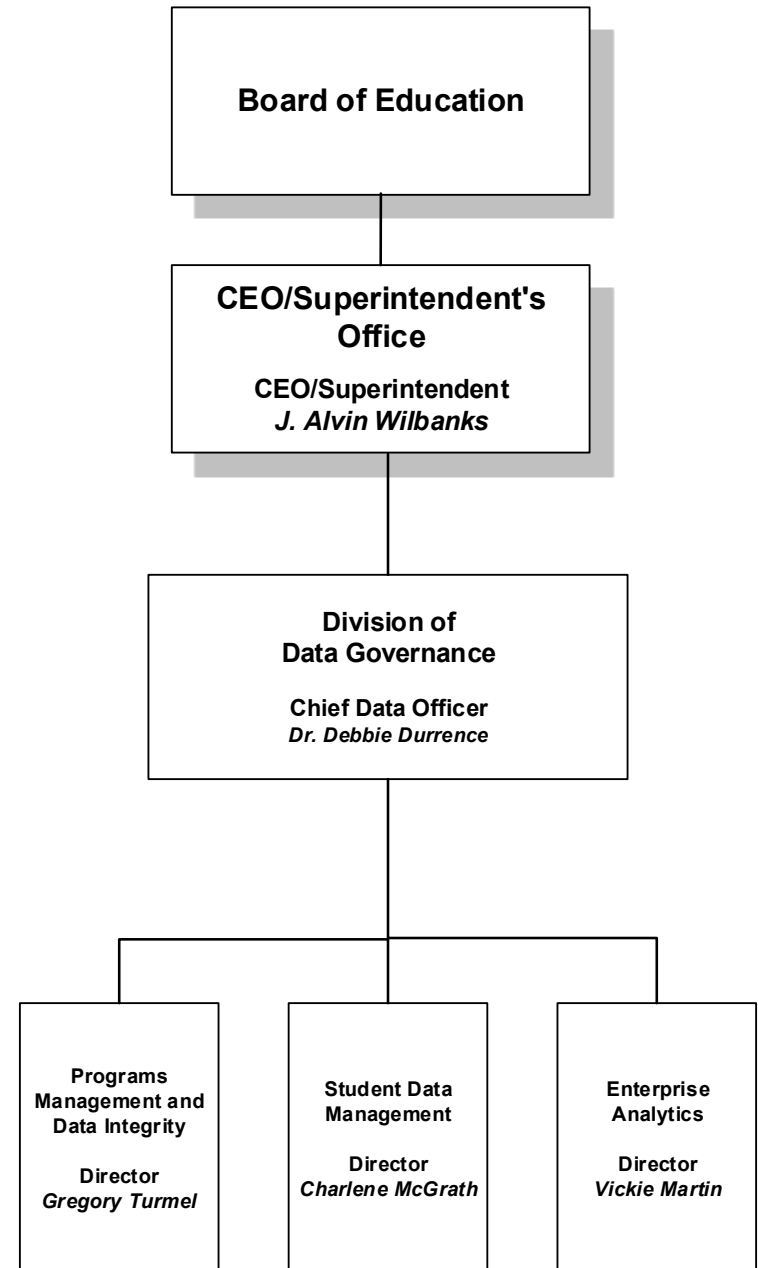
*678-301-6200 / fax: 678-301-6202*

*Instructional Support Center*



**Division Objectives**

- Implement data governance and data management processes increasing student data quality
- Design and operationalize the Education Data Platform (EDP)
- Implement quality practices for oversight, review and revision of all student data capture, reporting, and analytics





**Department of Student Data Management**  
**Charlene McGrath, Director**  
**678-301-6447 / fax: 678-301-7347**

The **Department of Student Data Management** supports the mission of Gwinnett County Public Schools by providing a variety of application and support services to our district staff, school staff, students, and parents. The department also supports the review of all district vendors utilized by schools and the district, and provides best practices for data stewardship and data quality. The **Department of Student Data Management** is responsible for the student information system and gradebook, student portal, parent portal, online registration, assessment system, IEP system, state and federal reporting, application enhancements and support, data reporting, and training.



**Department of Enterprise Analytics**  
**Vickie Martin, Director**  
**678-301-6664 / fax: 678-301-7347**  
**(Instructional Support Center)**

The **Department of Enterprise Analytics** captures business-critical information and makes it visible across the entire organization. Data is transformed into information and made available in manageable formats that enables GCPS staff to make informed decisions that will positively impact the education of all our students. Analytics represents a discipline that evaluates collected data to obtain new insights, measure results, and understand the performance of the organization. The **Department of Enterprise Analytics** is responsible for providing data-driven dashboards and reports for both school-based and district-level users with a focus on school-based dashboards that deliver early warning capabilities and consolidated views of teaching and learning that provide actionable insights to improve student achievement.



**Department of Programs Management and Data Integrity**  
**Gregory Turmel, Director**  
**678-301-6210 / fax: 678-301-6205**

The **Department of Programs Management and Data Integrity** is committed to the stewardship of data by managing the data collection programs and data integrity through the use of established data standards that meets or exceeds the highest expectations in data governance, integration services, and data quality practices. We utilize proven business practices and ensure compliance with policies and procedures that meet the highest standards for accountability, data security, and trust. This office is responsible for the effective management, coordination, and integration of data systems within the areas of programs management, systems integration, data quality, data management, and the establishment of the unified education data platform.