



Gwinnett County Public Schools

Office of Health & Social Services

Community Resource Catalog



"In the pursuit of becoming a system of world-class schools"

Table of Contents

Behavioral Health	3
Crisis Response.....	3
Hospital/Residential Programs.....	3
Counseling.....	5
Grief	9
Medical	10
General	10
Prescription Assistance	14
Vision	15
Dental	17
Pregnancy and Teen Parenting.....	19
Students with Disabilities	21
Mental Health.....	21
Medical	22
Supportive Services	23
Housing	27
Rent/Utility Assistance	27
General Housing Helplines.....	27
Homeless Housing Services.....	28
Domestic Violence	29
Food	31
Employment	34
Legal	34
Multi-cultural Resources	36
Multi-resource Agencies	39
Hotlines	40





BEHAVIORAL HEALTH

If your student has insurance coverage, please contact your insurance provider FIRST to determine where they have authorized access for mental/behavioral health services. Please confirm, either while making an appointment or prior to going to an appointment, if your insurance provider is accepted. Also, your insurance provider may have referrals to specific therapists who specialize in children and adolescent issues.

Crisis Response

Georgia Crisis & Access Line (GCAL)

1-800-715-4225

www.mygcal.com

Help is available 24/7 for Georgians experiencing challenges with mental health, drugs, alcohol, or developmental disabilities.

Hospital/Residential Programs

SummitRidge Hospital

678-442-5800

250 Scenic Highway Lawrenceville, GA 30045

www.summitridgehospital.net

Age Range: 11-18.

Inpatient, partial hospitalization, intensive outpatient.

ViewPoint Health Crisis Stabilization Unit

678-209-2710

2591 Candler Road Decatur, GA 30032

www.myviewpointhealth.org

Age Range: 14-18.

Insurance: Accepts most major insurance and CMOs.

Inpatient, stabilization

Peachford Hospital

770-455-3200

2151 Peachford Road Atlanta, GA 30339

www.peachford.com

Age Range: 4-18.

Insurance: Free assessments, accepts most major insurance and CMOs (except Ambetter).

Inpatient, intensive outpatient, partial hospitalization, parenting classes, pharmacy.

Riverwood Behavioral Health

877-578-8030

223 Medical Center Drive Riverdale, GA 30274

www.riverwoodsbehavioral.com

Age Range: 10-18.

Insurance: Accepts most major insurance and CMOs. Inpatient only.

Ridgeview Institute

844-350-8800

709 Breedlove Drive Monroe, GA 30655
3995 South Cobb Drive Smyrna, GA 30080
www.ridgeviewinstitute.com

Age Range: 12-18.

Insurance: Free assessments, accepts most major insurance and CMOs.

Inpatient, stabilization, partial hospitalization, intensive outpatient.

Laurelwood Hospital

(Northeast GA Health System)

***Adolescent unit is currently closed due to COVID-19**

770-219-3800

200 Wisteria Drive Gainesville, GA 30501

www.nghs.com

Age Range: 12-18.

Inpatient, behavioral health therapists.

Hillside Inc.

690 Courtenay Dr NE, Atlanta, GA 30306

404-875-4551

<https://hside.org/treatment-services/residential-program/>

Age Range: 10-18

In order for a child to be considered for admission, the team at Hillside needs to see clinical documentation from a mental health professional that clearly outlines: diagnosis, current medications, historical information describing how the child's symptoms began and have progressed, current behaviors within the last 2-4 weeks that necessitate placement in higher levels of therapeutic treatment, and a description of interventions that have been tried to address the issues.

Counseling

The following resources have been categorized based on geographic region for your convenience. An agency may be placed in a specific geographic region based on their office location, but they may provide services county-wide. School personnel and/or parents are welcome to choose a resource from various geographic regions.

North Gwinnett Counseling Resources (Auburn, Braselton, Buford, Hoschton, Sugar Hill, Suwanee)

North Gwinnett Counseling Associates

770-932-2899

3445-A Lawrenceville-Suwanee Rd.
Suwanee, GA 30024

www.ngcounselingassociates.com

Dr. Mary Grace Thomas, Ph.D.

Laura Leigh Ayer, LPC

678-714-9590

4411 Suwanee Dam Road Suite 920
Suwanee, GA 30024

Bold Crossings Counseling

Brianna Owen, LPC, CPCS

470-310-1777

2070 Buford Hwy., Suite 1B, Buford, GA 30518
boldcrossingscounselingandconsulting.com

Ser Familia

678-363-3079, IN PERSON

2755 Sawnee Avenue, Buford, GA 30518
Multi-lingual service provider

Margaret Shiver, LPC

678-820-9785

3441 Lawrenceville Suwanee Rd., Suite B
Suwanee, GA 30024

www.margaretshiver.com

Balanced Life Counseling

Maike Wegner-Kleine, LMFT

470-231-8725

4486 Commerce Dr., Suite A, Buford, GA 30518
www.balanced-life-counseling.com

Dr. Chuck Cancilla, Ph.D.

470-210-3130

897 Eva Kennedy Road
Suwanee, GA 30024

Northeast GA Counseling

770-271-5040

359 Peevy Street, Buford, GA 30518
www.northeastgacounseling.com

Lawrenceville Counseling Resources (Dacula, Lawrenceville)

CHRIS Counseling Center – Gwinnett

678-376-3800, VIRTUAL OR IN PERSON

760 Longleaf Blvd
Lawrenceville, GA 30046

Ray of Hope Counseling Services

678-213-2194

1838 Old Norcross Rd., Suite 400
Lawrenceville, GA 30044

www.Rhcounselingservices.com

Cruse Medical Care

678-377-1108, IN PERSON

1844 Old Norcross Rd Lawrenceville, GA 30044
Psychiatrist who takes MA, interpreters

Atlanta Family Counseling Center

770-513-8988

190 Camden Hill Road- Suite A
Lawrenceville, GA 30046

<https://afcounseling.com>

Responsible Child LLC
Maria Chen Foley, Ph.D., LPC
678-924-3201
2775 Cruse Road, Suite 1601
Lawrenceville, GA 30044
www.responsiblechild.com

Mindful Works Counseling, LLC
La'mar Walker, LPC, CPCS
678-960-8379
195 W. Pike St., Suite 209
Lawrenceville, GA 30046
www.mindfulworkscounseling.org

Cognitive Behavioral Health
770-828-8103
3617 Braselton Hwy., Suite 104
Dacula, GA 30019
www.cbhealth.net

Social Empowerment Center
770-925-2095
2775 Cruse Rd., Suite 1602
Lawrenceville, GA 30044
www.socialempowermentcenter.com

Counseling and Assessment Specialists, LLC
Lisa Hunter, LPC, CPCS
770-324-4420
271B Culver Street, Suites C & D
Lawrenceville, GA 30046
www.lisahuntercounseling.net

InPowerment.Inc.
Natolie Gray Warren, MA, LPC
Jessica Harris, MA, LAPC
770-771-8208
1840 Old Norcross Rd., Suite 300
Lawrenceville, GA 30044
www.inpower1.com

Solutions of Life, LLC
Nikiya S. Spence, LCSW, CMC
770-638-7145
2775 Cruse Rd., Suite 102, Lawrenceville, GA 30044
www.solutionsoflife.com

Duluth Counseling Resources (Berkeley Lake, Duluth)

Angel Lopez Associates
770-232-0555, VIRTUAL
2250 Satellite Blvd Ste 175
Duluth, GA 30097
Multi-lingual service provider

Asian American Resource Center
770-270-0663
3635 Peachtree Industrial Blvd #450
Duluth, GA 30096
Multi-lingual service provider

Lilburn Counseling Resources (Lilburn, Stone Mountain, Tucker)

Rockbridge Psychological Associates
770-925-7898, VIRTUAL
5440 Lawrenceville Hwy, Lilburn, GA 30047

Norcross Counseling Resources
(Doraville, Norcross, Peachtree Corners)

Families First

404-853-2844, VIRTUAL
5360 Old Norcross Rd, Norcross 30071
Sliding scale, No MA

The Pathway Center for Psychotherapy

770-446-5642
4350B South Berkeley Lake Rd.,
Norcross, GA 30071
www.pathwaycenter.com

**Clinic for Education, Treatment and Prevention of
Addiction, Inc. (CEPTA)**

770-662-0249, VIRTUAL
6020 Dawson Blvd, #1, Norcross, GA 30093
Counseling mental health
Fees based on family income

Geraldine (Jerry) Connor

678-355-8446
6045 Atlantic Blvd., Suite 218,
Norcross, GA 30071

New Horizons Counseling Center, Inc.

Dr. Lewis T. Kola, Dmin, LMFT, LPC, NCC
678-291-9029
6000 Live Oak Pkwy., Suite 108A,
Norcross, GA 30093
www.nhccinc.org

Sutherland Psychotherapy Associates, LLC

Lisa Bryan, LPC, NCC, M.Ed.
770-450-5374
4989 Peachtree Parkway, Suite 200,
Norcross, GA 30092
www.sutherlandtherapy.com

Southeast Gwinnett Counseling Resources
(Grayson, Loganville, Snellville)

Mosaic Counseling Group

470-292-7485
299 Cooper Rd., Suite A,
Loganville, GA 30052
www.mosaiccounselinggroup.com

General Counseling Services

IllumiNATION Counseling and Coaching, LLC

Latasha Matthews, LPC
Darrin Goodwin, APC
678-585-1966
Completely virtual office serving
Georgia and Florida
www.illuminationcc.com

The Children's Center for Hope & Healing

770-532-6530
226 Main Street SW,
Gainesville, GA 30501
www.hopeandhealingga.org

Pathways Transition Programs, Inc.

Decatur Office (Main)
120 E Trinity Pl
Decatur, Georgia 30030
Phone 404-378-2300

Winder Office
Opening November 2021
363 Resource Pkwy
Winder GA 30680

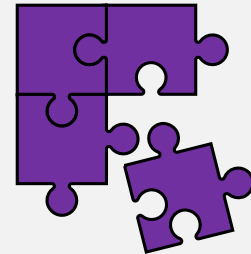
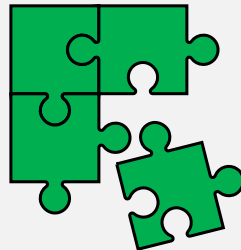
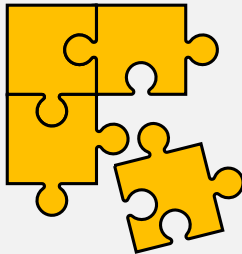
<https://www.pathwaystransitionprograms.com/>

ViewPoint

678-209-2411

<https://www.myviewpointhealth.org/>

View Point Health provides adult and youth outpatient services and promotes overall health and quality of life through treatment services that reduce the impact of mental illness for individuals and families.



Grief

Camp MAGIK

404-790-0140

<http://www.campmagik.org>

Camp MAGIK is a weekend camp for children/youth with options for parents/guardians to attend sessions, too. Each session will be divided into two groups, ages 7-11 and 12-17. There is no cost for camp for children/youth and \$25 for parents/guardians.

Camp Stars

404-869-3086

<https://vnhs.org/hospice-atlanta/camp-stars/campstars@vnhs.org>

Camp STARS bereavement camp for families is designed to help people understand that their feelings of loss are normal and that they are not alone. There is no cost for camp other than a small administrative fee of \$40 per family.

Kate's Club

404-347-7619

1190 West Druid Hills Drive NE, Suite T80,
Atlanta, GA 30329 <http://katesclub.org/>
info@katesclub.org

Kates' Club fosters positive social and emotional development through four main programs including: *Support Services*, therapeutic group activities designed and led by licensed professionals.

Grief Share Support Group (Adults)

770-925-8600

4000 Five Forks Trickum Rd. SW, Lilburn, GA
30047 <https://www.griefshare.org/>

Rainbows Support Group (Children)

770-925-8600

4000 Five Forks Trickum Rd. SW, Lilburn, GA
30047 <http://rainbows.org/>

New Mercies Christian Church: Rainbows Grief Support is a free 13 week classes for children ages 3- 18 to teach them how to cope, and navigate through grief and heal from the loss.

The Compassionate Friends Support Group

770-757-4927 (June)

770-833-9967 (Patty)

100 E. Crogan St. Lawrenceville, GA 30046

<https://tinyurl.com/b4prvnfi>

<http://www.tcfatlanta.org>

tcfwinnett@yahoo.com

This group supports a family after a child passes away. Meetings are held the third Thursday of each month at 7:00 pm.





MEDICAL

General Medical Resources

Division of Family and Children Services

(Medicaid for Families and Children)

1-877-423-4746

(For case specific information and other inquiries)

Lawrenceville (Main County Office): 678-518-5500

Norcross (Satellite Office): 770-441-8800

<https://compass.ga.gov/selfservice/>

To complete a child-care, TANF, Food Stamps, Medicaid application and/or update information, visit website

Mercy Care

678-843-8600

<https://tinyurl.com/388z48bf>

Health care (General medicine, dental services, pediatrics and immunizations) at permanent clinics as well as at mobile sites (no Gwinnett locations). Call or visit website for specific information regarding various clinic sites.

Offers sliding fee scale, based on proof of income, with payments as low as \$35 per visit. Persons experiencing homelessness and those with proof of no income, may not be charged a fee. Payment plans also available.

Georgia Charitable Care Network

678-389-3333

<http://www.charitablecarenetwork.com>

Connects the uninsured with non-profit medical and dental clinics across Georgia.

St. Vincent de Paul

678-892-6163

<http://www.svdpatl.org/>

Financial assistance for medical and dental care as well as prescriptions. Direct aid or assistance is offered on a personal basis.

North Gwinnett Medical Resources

(Auburn, Braselton, Buford, Hoschton, Sugar Hill, Suwanee)

Buford Health Center

770-614-2401 press 4

2755 Sawnee Ave., Buford, GA 30518

Monday – Friday, 8:00 – 5:00

Children's At Suwanee

404-785-8910

3640 Burnett Rd

Suwanee, GA – 30024

Lawrenceville Medical Resources (Dacula, Lawrenceville)

Four Corners Primary Care Centers 770-806-2928

Lawrenceville: 175 Gwinnett Drive, Suite 213,
Lawrenceville, GA 30046
8:00 am – 5:00 pm Monday-Friday

Norcross: 5300 Oakbrook Pkwy., Bldg. 100,
Suite 100, Norcross, GA 30093
8:00 am – 5:00 pm Monday-Friday

<http://www.fcpchealth.com>

Accepts Medicaid, Medicare, and private insurance. Services are offered on a sliding fee scale based on income and household size

The Hope Clinic 770-685-1300

<http://www.hopeclinicgwinnett.info/>

121 Langley Drive, Lawrenceville GA 30046

Hope Clinic is not a free clinic; however, they do offer reduced fees to uninsured patients. Fees are charged to patients on a sliding scale that is based on their annual household income. The Clinic charges reduced fees for cash paying patients. The Hope Clinic provides medical care at rates that are 30 to 60 percent less than the actual cost of services.

The Clinic accepts two types of payment: (1) Self Pay—for patients who are uninsured or who do not want insurance filed, (2) Medicare (NOT Medicaid).

If you elect to self-pay and would like to be considered for the sliding scale, please bring one of the following documents to each visit: current pay stub, most recent W-2 form, statement from employer verifying income, shelter letter, treatment program letter, letter from caseworker, letter from church or other health center.

Lawrenceville Health Center 770-339-4283

455 Grayson Hwy., Suite 300,
Lawrenceville, GA 30046
Monday – Friday, 8:00 – 5:00

Truth's Community Clinic 770-277-4675

www.truthsclinic.org

250 Langley Drive, Suite 1316
Lawrenceville, GA 30046

Qualification Appointment Hours:
10:00 am – 3:00 pm Monday

Medical Clinics: First and third Tuesday
Medical services offered are related to diabetes, high blood pressure, asthma, and thyroid concerns. Clinic is unable to treat common colds, orthopedic needs, cancer or heart conditions.

A donation of \$20 is suggested for services.
Unable to accept walk-in patients.

Duluth Medical Resources
(Berkeley Lake, Duluth)

Children's At Satellite Boulevard
404-785-8330
2660 Satellite Boulevard
Duluth, GA – 30096

Lilburn Medical Resources
(Lilburn, Stone Mountain, Tucker)

Norcross Medical Resources
(Doraville, Norcross, Peachtree Corners)

CPACS (Center for Pan Asian Community Services)

– **Cosmo Health Center**

770-446-0929

6185 Buford Hwy Bldg. G, Suite 100,
Norcross GA 30071

www.cpacscosmo.org

Hours: 9:00 am – 6:00 pm Monday-Friday
9:00 am – 1:00 pm Saturday

Provides preventative health care, school health
(immunizations, screenings to enter school), dental
care. Medicaid and Medicare accepted.
Multiple languages available.

Norcross Health Center

770-638-5700

5030 Georgia Belle Court, Norcross, GA 30093

Tuesday – Friday 8:00 – 5:00

Immunizations, Hearing, vision and dental
screening, WIC (A federal food supplement voucher
program) communicable diseases including STD's,
family planning, prenatal

Absolute Care Pediatrics, L.P.

678-866-3596

3459 Holcomb Bridge Road, Suite 100
Norcross, GA – 30092

Good Samaritan Health Center

East Gwinnett

770-806-0162

1175 Commercial Court
Norcross, GA 30093

West Gwinnet

678-280-6630

5949 Buford Hwy., Norcross, GA 30071

<http://www.goodsamgwinnett.org/>

Southside Medical Center

404-688-1350

<http://www.southsidemedical.net/>

5127 Jimmy Carter Blvd., Suite 205

Norcross, GA 30093

Hours: 9:00 am – 6:00 pm Monday-Friday; 9:00
am – 1:00 pm 1st & 3rd Saturday

Provides family practice, pediatric and women's
services at this location.

Accepts uninsured, underinsured insurance,
Medicare and Medicaid. Sliding fee scale available.

Four Corners Primary Care Centers

770-806-2928

Lawrenceville: 175 Gwinnett Drive, Suite 213,
Lawrenceville, GA 30046

8:00 am – 5:00 pm Monday-Friday

Norcross: 5300 Oakbrook Pkwy., Bldg. 100,
Suite 100, Norcross, GA 30093
8:00 am – 5:00 pm Monday-Friday

<http://www.fcpchealth.com>

Accepts Medicaid, Medicare, and private insurance. Services are offered on a sliding fee scale based on income and household size

Southeast Gwinnett Medical Resources (Grayson, Loganville, Snellville)

Gwinnett Community Clinic

770-985-1199, extension 6
2160 Fountain Drive, Snellville GA 30078
<https://tinyurl.com/bf3edh6m>

The clinic only treats uninsured Gwinnett County residents who qualify with our financial guidelines. All prospective patients must have a qualifying appointment.

Patients who have a qualification appointment must bring all the necessary documents.
Specific information on website.

Annual eligibility requirements:

Meet household income qualifying requirements; be a Gwinnett county resident; have no insurance, including Medicare or Medicaid; be under the age of 65

Children's At Snellville

404-785-8081
2220 Wisteria Drive
Snellville, GA – 30078
www.freeclinics.com/det/childrens_at_snellville



Prescription Assistance

Please be aware that there are high numbers of companies that advertise free or reduced- cost prescriptions online. Thoroughly research any company to determine if they are a legitimate and reputable business before you decide to access their services. In addition, please be careful of any company that expects payment for their help in linking you to assistance programs.

List of Cooperative Ministries:

City	Duluth 770-623-9563	Lawrenceville 770-339-7887	Lilburn 770-931-8333	Norcross 770-263-8268	North Gwinnett 770-271-9793	Southeast Gwinnett 770-985-5229
Types of Assistance	Rent, Utilities, Food, Prescriptions	Utilities, Food, Prescriptions	Rent, Utilities, Food, Prescriptions	Rent, Utilities, Food, Prescriptions	Utilities, Food, Prescriptions	Utilities, Food, Prescriptions
Eligible Zip Codes	30096,30097	30019, 30043, 30044, 30045, 30046	30047, 30084, 30087	30071, 30360, 30084, 30092, 30093	30024, 30518, 30519	30078, 30039, 30017, 30052

Needy Meds Helpline

1-800-503-6897

<http://www.needymeds.org>

NeedyMeds.org is an information resource dedicated to helping people locate assistance programs to help them afford their medications and other healthcare costs.

Partnership for Prescription Assistance

<http://www.pparx.org/>

The Partnership for Prescription Assistance helps qualifying patients without prescription drug coverage get the medicines they need for free or +nearly free.

Patient Assistance Program Center

<http://www.rxassist.org>

Email: info@rxassist.org

RxAssist offers a comprehensive database of patient assistance programs (which are run by pharmaceutical companies to provide free medications to people who cannot afford to buy their medicine).

RxHope, Inc.

<http://www.rxhope.com/>

Patient Assistance Programs (PAP) are designed to support low income US residents with free or low cost prescriptions. The programs usually cover brand name drugs only and are administered individually by the pharmaceutical companies that manufacture the drugs.

Free Drug Discount Card

1-866-561-1926

<http://yourrxcard.com/>

Hours: 9:00 am – 3:00 pm CST
(10:00 am – 4:00 pm EST)

Discounts vary and can range from 0% to 75% depending on the type of prescription, brand name, generic name and the location of the specific pharmacy.

Patient Advocate Foundation—Co-Pay Relief Program

<http://www.copays.org/>

CPR provides direct financial assistance with co-payments, co-insurance and deductibles required by the patient's insurer for medications prescribed to treat and manage their disease.

America's Best Contacts & Eyeglasses

Duluth: 770-497-8100

2205 Pleasant Hill Rd., Ste. 125,
Duluth, GA 30096

Buford: 678-318-2600

3350 Buford Drive, Ste. B-230, Buford GA 30519

Snellville: 470-415-5706

1679 Scenic Hwy. S, Suite 203, Snellville,
GA 30078

<http://www.twopair.com/>

Has an offer of 2 pairs of eyeglasses for
\$69.95 with a free eye exam.

This includes single vision plastic lenses and
frames tagged \$59.95.

Eye exam regularly \$45 without the two pair offer.

Two pair purchase is required for FREE eye exam
offer.

Essilor Vision Foundation

214-496-4316 or 1-866-385-0447

<https://www.evfusa.org>

The foundation can provide vision exams and
glasses to children in need.

Central Outreach and Advocacy Center

404-659-7119

201 Washington Street SW, Atlanta, GA 30303

[https://centraloac.org/programs/supportive-
services/](https://centraloac.org/programs/supportive-services/)

Eye clinic for prescription eyeglasses available:
Appointments made prior. Call for next available
date. Only one pair of glasses per lifetime

Georgia Lions Lighthouse Foundation

404-325-3630

5582 Peachtree Rd., Atlanta, GA 30341

<https://lionslighthouse.org/>

The foundation provides vision and hearing
services through education, detection, prevention
and treatment. Families can apply online or call
the mainline for application.

Lenscrafters

[http://www.lenscrafters.com/eyeglasses/
7/about/onesight-charitable-giving](http://www.lenscrafters.com/eyeglasses/7/about/onesight-charitable-giving)

New Eyes for the Needy

973-376-4903

<http://www.neweyesforheneedy.org/>

Applicants must have a primary care physician,
DFCS caseworker, or health clinic to submit a
voucher application along with a recent vision
prescription, within the past 12 months.

Patient must have had a recent eye exam. New
Eyes does not pay for eye exams.

OneSight

1-888-935-4589

<http://www.onesight.org>

OneSight provides free vision exams and eyewear to those in need.

They do not select recipients. They rely on local charitable partners to pre-screen all recipients based on visual and financial need.

If you need vision care, please contact your local 501(c)(3) non-profit organization including Prevent Blindness America, Lions Club or other social service agency in your community to get help. Or, contact your local LensCrafters, Pearle Vision, Sears Optical or Target Optical to have them assist you with a charitable agency that can sponsor you by verifying you have financial and vision need.

Sight for Students

(provided through Vision Service Plan)

1-888-290-4964

<http://www.sightforstudents.org/>

Certificates (for free vision exams and glasses to low-income, uninsured children of working parents who do not qualify for government assistance) are delivered through a network of community partners who work directly with children. VSP relies on these partners to identify children with potential vision problems and determine if a child meets the eligibility requirements of the Sight for Students program.

Please review the qualification guidelines on the web site, and then use the web site to find a partner in your area.

Vision USA

Managed by American Optometric Association
(AOA)

<http://www.aoafoundation.org/vision-usa/>

Prevent Blindness Georgia

404-266-2020

739 West Peachtree St. Suite 200,
Atlanta, GA 30308

<https://georgia.preventblindness.org/>

Services include screening eye examinations for three, four and five year olds in lottery-funded pre-kindergarten classes Head Starts, public and private schools, and childcare centers across Georgia, vision screening, glaucoma screening, ophthalmology referrals.

ZenniOptical

1-800-211-2105

<http://www.zenniOptical.com/>

ZenniOptical is an online-only resource that produces low cost glasses. They do not accept insurance and they do not provide an eye exam.



Dental

CPACS (Center for Pan Asian Community Services)

– Cosmo Health Center
770-446-0929

<http://cpacs.org/index.php?mid=cosmo>

6185 Buford Hwy Bldg. G, Norcross GA 30071

Hours: 9:00 am – 6:00 pm

Monday-Friday;

9:00 am – 1:00 pm, Saturday

Provides preventative health Care, school health (immunizations, screenings to enter school), dental care. Medicaid and Medicare accepted. Multiple languages available.

Lawrenceville Dental Clinic

770-339-5642

455 Grayson Highway, Suite 300

Lawrenceville, GA 30046

Mon. Thurs. & Fri. 8:00 am-5:00 pm

Tues. & Wed. 8:00 am-6:30 pm

Truth's Community Clinic

770-277-4675

250 Langley Drive, Suite 1316

Lawrenceville, GA 30046

www.truthsclinic.org

Qualification Appointment Hours:

10:00 am – 3:00 pm Monday

Dental Clinics: First, second and third Thursday
Dental services offered are related to fillings and extractions. They are unable to assist with root canals, crowns or dentures.

A donation of \$20 is suggested for services.

Unable to accept walk-in patients.

Must reside in Lawrenceville, Dacula, Buford and the Gwinnett side of Auburn

Norcross Dental Clinic

770-638-5700 press 3

5030 Georgia Belle Court Norcross, GA 30093

Monday, Wednesday, Friday

8:00 am-5:00 pm

Tuesday, Thursday

8:00 am-7:00 pm

Gwinnett County Health Departments

www.gnrhealth.com

Each clinic can provide exams, cleanings, x-rays, fluoride, treatments, and fillings. Medicaid accepted, and clients can pay in cash.

Buford Dental Clinic

770-614-2401 press 4

2755 Sawnee Ave, Buford, GA 30518

Mon. & Thur. 8:00 am-7:00 pm

Tues. Wed. & Fri 8:00 am-5:00 pm

Mercy Care

678-843-8600

www.mercyatlanta.org

Health care, including dental services at DeKalb and Atlanta locations. Call or visit website for specific information regarding various clinic sites. Offers sliding fee scale, based on proof of income, with payments as low as \$35 per visit. Persons experiencing homelessness and those with proof of no income, may not be charged a fee. Payment plans also available.

PeachCare For Kids

1-877-GAPEACH (1-877-427-3224)

<http://www.peachcare.org/>

Free or low-cost insurance for children. Families must meet all eligibility requirements.

Perimeter College Dental Clinic

770-274-5140

www.perimeter.gsu.edu/dh/#clinic

All treatment procedures are provided by dental hygiene students under the direct supervision of licensed dental hygiene faculty of the Georgia Perimeter College Department of Dental Hygiene

Power Line

770-451-5501 or 1-800-300-9003

<https://tinyurl.com/yckrw9x9>

8:00 am – 6:00 pm Monday-Friday

St. Vincent de Paul

678-892-6163

<http://s.www.svdpatl.org/>

Georgia Charitable Care Network

404-494-7823

<http://www.gfcn.org/>

Connects the uninsured with non-profit medical and dental clinics across Georgia.



Planned Parenthood—Gwinnett Center

404-688-9300

798 Lawrenceville Suwanee Road, Suite 300,
Lawrenceville GA 30043

<http://www.plannedparenthood.org>

Services provided includes general health services, men's and women's health services, specialist medical services and more.

Accepts uninsured, underinsured insurance and Medicaid and financial assistance is available.

Both English and Spanish spoken with other languages by translation service.

Centro Prenatal De Gwinnett

(Gwinnett Prenatal Center)

770-227-0230

575 W. Pike St. Suite 1
Lawrenceville, GA 30046

Three Strands Inc

470-202-8848

1000 Peachtree Industrial Blvd.,
Suwanee, GA 30024

[https://www.threestrandsinc.org/
threestrandsinfo@gmail.com](https://www.threestrandsinc.org/threestrandsinfo@gmail.com)

For Birth Moms considering adoption support

International Women's Health Services (CIMA)

678-672-4645

5161 Brook Hollow Pkwy., Suite 200
Norcross, GA 30071

info@cimasalud.net

Monday-Friday 9:00 am – 5:00 pm

Quality Care for Children

404-479-4200 or 1-877-ALL-GA-KIDS
(1-877-255-4254)

<http://www.qualitycareforchildren.org/> and
<https://www.allgakids.org/>

9:00 am – 4:30 pm Monday-Friday

Pregnancy Resource Center

(Obria Medical Clinic)

770-338-1680

565 Old Norcross Rd. Suite 200
Lawrenceville, GA 30046

www.Obria.org/locations/Lawrenceville-ga

Medical consultations, STD testing and treatment, pregnancy testing, prenatal care, health education and referrals.

Clinica de la Mama

770-613-0670

5050 Jimmy Carter Blvd., Norcross GA 30093

Will work with undocumented individuals in developing a payment plan.

OB/GYN Clinic

(through the Gwinnett Hospital System)

678-442-4616

Contact: Sheila Warren 470-325-6947 or
mygps@gwinnettmedicalcenter.org

Phoenix Parenting Program

770-513-6876

<http://www.phoenixhighschool.us/>

Catholic Charities of the Archdiocese of Atlanta, Inc.

404-920-7748

2401 Lake Park Drive, SE, Smyrna, GA 30080
Pregnancy, parenting education and adoption services

American Pregnancy Helpline
1-800-942-6466

Second Chance Homes
<http://www.gcapp.org/second-chance-homes>

ChildCare and Parents Services (CAPS) Program

1-833-4GACAPS (1-833-442-2277)

<https://caps.decal.ga.gov/en/>

The CAPS program can subsidize the cost of childcare for children who are US citizens or legal residents and under age 13. The age can be extended to 18 if the child has special needs.

DECAL program that provides day care funds for pregnant teens to stay in school after their baby is born. Priority is given to currently enrolled students who want to stay in school and students must be under 18 years old to qualify.

To apply for the program: Families must be a resident of Georgia; student will need to fill out a childcare inquiry form about 1 to 2 weeks before going back to school after the baby is born as well as research day care in her area.





STUDENTS WITH DISABILITIES

Mental Health

Atlanta Family Counseling

770-513-8988

190 Camden Hill Rd. Suite A,
Lawrenceville, GA 30046

www.atlantafamilycounselingcenter.com

Gwinnett Psychology

Dr. Cassin Cole-Straub

507-722-2402

1805 Herrington Rd. Bldg. 2,
Lawrenceville, GA 30043

Mood disorders, anxiety disorders, Autism Spectrum disorders, adjustment disorders, assessment and treatment of ADHD, behavioral problems.

Peach State Pediatric Therapy, Inc.

770-904-6419

4992 Bristol Industrial Way, Buford, GA 30518

www.peachstatetherapy.com

Occupational therapy clinic providing home and clinical based occupational therapy. Evaluation and treatment for children birth to 21 years of age.

Psychological Evaluations

Mind and Motion Developmental Centers of GA

678-749-7600

5050 Research Ct., Suite 800, Suwanee, GA
30024 www.mindmotioncenters.com

Therapy Works

770-995-2379

1509 Atkinson Rd. Suite 1100

Lawrenceville, GA 30043

www.therapyworkspc.com

Peach Pediatric Psychology

678-999-3477

750 Hammond Drive, Bldg. 10, Suite 100

Atlanta, GA 30328

www.peachpsychology.com

Organization for the Support, Advocacy and Education for Those with ADD/ADHD

866-200-8098

www.chadd.org

Connection Tools for Those Dealing with ADD/ADHD

954-412-1332

www.myadhd.com

Autism Society Georgia Chapter

770-904-3866

www.autismsocietygeorgia.org

Medical (Youth with Disabilities)

Emory Autism Center 404-727-8350

<https://tinyurl.com/yr5c53zu>

Offers clinical, educational and medical supports to individuals with autism (ages 15 months through adulthood)

Children's Medical Services 404-657-2850

<https://dph.georgia.gov/CMS>

Provides care coordination for services available for children with chronic medical conditions from birth to 21 years of age who live-in low-income households.

FOCUS + Fragile Kids 770-234-9111

<https://focus-ga.org>

Helps children who are medically fragile or have significant disabilities. We comfort with hospital visits and support groups, offer hope by information and education, provide fun activities for parents and kids and help to make equipment available to children in need.

Georgia Pediatric Program (GAPP) Waiver 404-657-7882

<https://dch.georgia.gov/waivers>

Provides services to medically fragile children with multiple system diagnoses. Services are provided in their homes and communities and in a 'medical' daycare setting as an alternative to placing children in a nursing care facility.

PeachCare for Kids 877-427-3224

<https://dch.georgia.gov/peachcare-kids>

A comprehensive health care program for uninsured children living in Georgia.

Champions for Children 1-866-584-3742

<http://www.championsforchildrenga.org>

Provides respite care, medical supplies, equipment, travel reimbursements for medical appointments, recreational or therapeutic activities for children under 18 with a physical, cognitive, developmental, or medical disability. Current Medicaid recipients are not eligible.

Duraline Medical Products 1-800-654-3376

<https://www.dmponline.com>

Carries an extensive line of incontinence products ranging from infant to bariatric sizes. Delivers products straight to your doorstep.

Friends of Disabled Adults and Children (FODAC) 770-491-9014

4900 Lewis Road, Stone Mountain, GA 30083

<https://www.fodac.org>

Provides refurbished equipment and services for adults and children with disabilities, including free or low-cost wheelchairs and other durable medical equipment, vehicle and home adaptations and more.

Kiddos Clubhouse Foundation 678-527-3224

11539 Park Woods Drive
Alpharetta, GA 30005

<http://www.kiddosclubhousefoundation.org>

Provides therapy scholarships to help families pay for critical therapies. The organization also provides public education about disabilities.

Children's Medical Services 404-657-2850

<https://dph.georgia.gov/CMS>

Provides care coordination for services available for children with chronic medical conditions from birth to 21 years of age and live-in low-income households.

TEFRA/Katie Beckett/Deeming Waiver

678-248-7449

<https://medicaid.georgia.gov/tefra>

Permits the state to ignore family income for certain children who are disabled. It provides benefits to certain children 18 years of age or less who qualify as disabled individuals under the Social Security Act and who live at home rather than in an institution. These children must meet specific criteria to be covered.

Qualification is not based on medical diagnosis; instead it is based on the institutional level of care the child requires.

Champions for Children

1-866-584-3742

<http://www.championsforchildrenga.org>

Provides respite care, medical supplies, equipment, services and therapies, travel reimbursements for medical appointments, recreational or therapeutic activities. Current Medicaid recipients are not eligible for this program

Supportive Services (Youth with Disabilities)

Gwinnett County Public Schools Parent Mentors

678-301-7149 or 678-301-7212

<http://www.parentmentors.org/mentor/gwinnett-county>

Provides parents of students with disabilities information, guidance, and resources to support students at home, school and in their communities.

Bennett's Place Interactive Learning Center

678-878-4103

800 Lawrenceville Hwy., Lawrenceville, GA 30046

<https://www.bennettsplacega.com>

Offers services for special needs individuals, including an afterschool program, respite care, a variety of therapies and a summer camp.

Lekotek of Georgia, Inc.

Duluth: 404-633-3430

2250 Satellite Blvd., Duluth, GA 30097

<http://www.lekotekga.org>

Using adapted toys, educational materials, computer equipment and iPads, we primarily serve children from birth to 8 years of age. Computer services also available to adolescents and young adults.

Childkind

404-248-1980

1990 Lakeside Parkway, Suite 350

Tucker, GA 30084

<https://childkind.org>

Home based services through a continuum of care and placement services in foster care and host homes for children with complex care needs.

Friends of Disabled Adults and Children (FODAC)

770-491-9014

4900 Lewis Road, Stone Mountain, GA 30083

<https://www.fodac.org>

Provides refurbished equipment and services for adults and children with disabilities to improve their overall quality of life.

ViewPoint Health:**Developmental Disabilities Services**

678-209-2555

<https://www.myviewpointhealth.org>

Provides residential services, community integration services, family support and supported employment

Bobby Dodd Institute

(Formerly All About Developmental Disabilities)
678-365-0071 or 404-881-9777
125 Clairemont Ave., Suite 300
Decatur, GA 30030
<http://www.bobbydodd.org> or <http://aadd.org>
Provides outreach services, family support and benefits consulting.

Dept of Behavioral Health and Developmental Disabilities Family Support Services

404-232-1912
<https://dbhdd.georgia.gov/family-support-services>
Individuals, age 3 and up, living in Georgia that have been diagnosed with a developmental disability who are living at home, with their family, and are not currently receiving a NOW/COMP Waiver, are eligible for Family Support Services

Hope House Children's Respite Center

770-969-8354
<http://www.swchristiancare.org/hope-house>
Center includes multi-sensory activity room, Hydrotherapy room, wheelchair accessible playground, and lots of crafts and fun activities.

Marcus Autism Center

404-785-9400
Monday – Friday 8am – 4:30pm
<http://www.marcus.org>

Metro East Georgia Learning Resources System

678-676-2417
<http://www.me.glr.org>
Provides professional learning, technical assistance, coaching and other resources to educators and families of students with disabilities.

Georgia Baptist Children's Homes and Family Ministries

770-463-3800
<http://www.georgiachildren.org/kids-with-special-needs>
Offers community counseling centers, therapeutic center and adventure respite services. They also coordinate Camp Hawkins.

Health Law Partnership (HeLP)

404-785-2005
<https://healthlawpartnership.org>
Interdisciplinary community collaboration between healthcare providers and lawyers to improve the health and well-being of low-income children and their families.

InCommunity

Atlanta: 404-634-4222
Roswell: 770-664-4347
<https://www.incommunityga.org>
Provides community-based services and support to people with disabilities and their families.

Megan's House

229-439-7061
<http://www.easterseals.com/southerngeorgia/our-programs/childrens-services/megans-house.html>
Children's respite home located in Albany, Valdosta, and Waycross for children ages 0 - 17, who have developmental disabilities. Fees for services are determined by a sliding fee scale and scholarships may be available.

Parent to Parent of Georgia

770-451-5484
<http://p2pga.org>
Source of choice for support, information, education and leadership development for special health care needs, ages birth to 26, and their families. Offers a detailed Special Needs database.

Shadowbrook Baptist Church

*** on hold due to COVID***

770-945-1524

4187 Suwanee Dam Rd NW, Suwanee, GA 30024

<http://www.shadowbrookchurch.org>

pure@shadowbrookchurch.org

Offers monthly respite care for families of children with special needs.

SPECTRUM

770-239-6630

<https://atl-spectrum.com> info@atl-spectrum.com

Support the autism community through many programs, events, and resources.

Social Security Administration –

Supplemental Security Income

1-800-772-1213

Monday – Friday 8 am – 7 pm

<https://www.ssa.gov/benefits/ssi/>

Program pays benefits to disabled adults and children who have limited income and resources.

United Cerebral Palsy of Georgia

770-676-2000

Monday – Friday 8:30 am – 4:30 pm

<https://ucpga.org>

Offers community living, in home support, adult day programs, and supportive services.

Your Respite, LLC

<http://www.yourrespite.com> stacy_georges@bellsouth.net

Provides childcare for special needs children, in your home, up to age 19

Supportive Services (Adults with Disabilities)

Creative Enterprises

770-962-3908

701 Hi Hope Lane, Lawrenceville, GA 30043

<http://www.creativeenterprises.org>

Operates a community rehabilitation program providing employment and life skills training to adults with disabilities by offering on/off-site work programs, job placement assistance, educational programs, and community involvement.

Annandale Village

770-945-8381

3500 Annandale Lane, Suwanee, GA 30024

<http://annandale.org>

Life assistance for adults with developmental disabilities and acquired brain injuries. Residential services, community access day programs and independent living programs offered.

“Just” People

770-441-1188

<http://www.justpeople.org>

Offers apartment complexes that house adults with disabilities, job skills training, sports program, family support group and a day program.

Friends of Disabled Adults and Children (FODAC)

4900 Lewis Road, Stone Mountain, GA 30083

770-491-9014

<https://www.fodac.org>

Provides refurbished equipment and services for those with disabilities including free or low-cost wheelchairs and other durable medical equipment, vehicle and home adaptations, and more.

Social Security Administration – Supplemental Security Income

1-800-772-1213

<https://www.ssa.gov/benefits/ssi/>

Georgia Vocational Rehabilitation Agency

844-367-4872

<https://gvs.georgia.gov>

Program pays benefits to disabled adults and children who have limited income and resources

Benefits Navigator

Ticket to Work Helpline: 1-866-968-7842

<http://www.benefitsnavigator.org>

Provides accurate work incentive information to people between the ages of 14 and full retirement age who receive Supplemental Security Income (SSI), Social Security Disability Insurance (SSDI), or both.

Shepherd Center Benefits Navigator

Project Work Incentive Planning and Assistance
1-800 283-1848

Works with people between the ages of 14 and 65 who are eligible for Social Security benefits based on a disability. They provide information to assist in making informed decisions when working and having Social Security benefits.

United Cerebral Palsy of Georgia

770-676-2000

<https://ucpga.org>

Offers community living, in home support, adult day programs, and supportive services.

Bobby Dodd Institute

(Formerly All About Developmental Disabilities)

678-365-0071 or 404-881-9777

125 Clairemont Ave., Suite 300

Decatur, GA 30030

<http://www.bobbydodd.org> or

<http://aadd.org>

Connects people with disabilities and disadvantages to jobs and the security and purpose that work brings. Provides outreach services, family support, and benefits consulting.

Dept of Behavioral Health and Disabilities

Family Support Services

<https://dbhdd.georgia.gov/family-support-services>

provides services and goods to assist individuals to live at home in the community.

Individuals, age 3 and up, living in Georgia that have been diagnosed with a developmental disability who are living at home, with their family, and are not currently receiving a NOW/COMP Waiver, are eligible for Family Support Services.

ViewPoint Health:

Developmental Disabilities Services

678-209-2555

<https://www.myviewpointhealth.org/about/idd>

Provides residential services, community integration services, family support and supported employment





HOUSING

Rent/Utility Assistance

List of Cooperative Ministries:

City	Duluth 770-623-9563	Lawrenceville 770-339-7887	Lilburn 770-931-8333	Norcross 770-263-8268	North Gwinnett 770-271-9793	Southeast Gwinnett 770-985-5229
Types of Assistance	Rent, Utilities, Food, Prescriptions	Utilities, Food, Prescriptions	Rent, Utilities, Food, Prescriptions	Rent, Utilities, Food, Prescriptions	Utilities, Food, Prescriptions	Utilities, Food, Prescriptions
Eligible Zip Codes	30096,30097	30019, 30043, 30044, 30045, 30046	30047, 30084, 30087	30071, 30360, 30084, 30092, 30093	30024, 30518, 30519	30078, 30039, 30017, 30052

General Housing Assistance

HomeFirst Gwinnett: Norcross Assessment Center

Intake Center telephone number: 770-847-6765

Current hours of operation: 8:00-5:00

<https://www.unitedwayatlanta.org/program/homefirst-gwinnett/>

Gwinnett Helpline:

770-995-3339

Georgia Department of Community Affairs

<https://www.dca.ga.gov/safe-affordable-housing>

Salvation Army

770-724-1677

<https://salvationarmyatlanta.org/lawrenceville>

The Quinn House

770-962-0470

<http://www.thequinnhouse.com>

Residential Program offers a 40-day Drug and Alcohol Program. Provides food, clothing, and other assistance to those in need.

Gwinnett Cares

Renters and homeowners:

For help, families can go to the Gwinnett Cares website: www.gwinnettcare.org Scroll down to the "Need Help" section.

Gwinnett Housing Corporation

770-963-4900 or 470-361-1070

<https://gwinnetthousing.org>

Lawrenceville Response Center

<https://www.impact46.org/lawrenceville-response-center>

Home of Hope

678-546-8770

<https://homeofhopegcs.org>

St. Vincent de Paul Society of Georgia

678-892-6163

<https://www.svdpgorgia.org>

findhelp.org

<https://auntbertha.com>

Search for free or reduced cost services like housing, medical care, food, & more

Georgia Affordable Housing Search

<http://www.georgiahousingsearch.org>

Lawrenceville Housing Authority

770-963-4900

<http://lawrencevilleha.org>

Buford Housing Authority

770-945-5212

www.habuford.com

Norcross Housing Authority

770-448-3668

19 Garner Street Northwest
Norcross, Georgia, 30071

Gwinnett County Partnership for Community Action

404-929-2500

5151 Brook Hollow Parkway Suite 135
Norcross, GA 30071
rent/mortgage and utility assistance

Homeless Housing Services: Shelters/Transitional/Permanent Housing

Covenant House

404-832-1282

<http://www.covenanthousega.org>

Shelter for homeless youth

Action Ministries Georgia and Hope Atlanta

The Programs of Travelers Aid

404-817-7070

<http://www.hopeatlanta.org>

Programs and Services include: Reunification, PATH & Street Outreach, Emergency Housing, Homeless Prevention & Rapid Re-Housing, Supportive Housing, Gwinnett County Shelter + Care Program, HIV/AIDS (HOPWA) Assistance, Supportive Services for Veterans & their Families, and Domestic Violence Assistance.

Nicholas House

www.nicholashouse.org

404-622-0793

Transitional housing shelter as well as scattered apartment sites for homeless families.

Project Community Connections, Inc

404-215-9991

<http://pccihome.org>

Faith Project

770-733-8859

www.thefp.org

Focused on housing homeless, veterans, and offenders. Males 18-60.

Atlanta Mission

404-588-4000

www.atlantamission.org

Caring Works

404-371-1230

<http://caringworksinc.org>

Asian American Resource Center

(Rapid Rehousing)

770-270-0663

www.aarcatl.org/programs

Rainbow Village, Inc.
770-497-1888
3427 Duluth Hwy. 120, Duluth, GA 30096
<http://rainbowvillage.org>

Family Promise of Gwinnett County
678-376-8950
<https://familypromisegwinnett.org/>
Temporary shelter for homeless students and their families

Domestic Violence Resources

Ahimsa House
404-452-6248 (24-hour crisis line)
404-496-4038 (Admin line)

<http://ahimsahouse.org/>

Agency to foster pets for families of domestic violence going into a shelter.

Partnership Against Domestic Violence
404-873-1766

24-hour crisis line: 404-273-6035

Spanish line: 404-870-9600

<http://padv.org/>

Agency offers emergency shelters, supportive housing, legal advocacy and teen dating violence prevention and trainings.

Nia's Place
404-371-1051

<https://www.niasvisitation.org>

Agency provides supervised visitation and supervised exchange of children for families affected by domestic violence.

Promise Place
770-460-1604 (24-hour crisis line)

<http://promiseplace.org/>

Agency offers safe environments for victims and their families, emergency shelters, transitional housing and legal advocacy.

Safe Haven Transitional, Inc.
404-241-8740

<http://www.safehaventransitional.org/>

Agency provides intermediate longer-term shelter with a variety of services to support women.

Caminar Latino
404-413-6348

Domestic violence support for women, youth and men, serving Latino families

www.caminarlatino.org

Women's Resource Center to End Domestic Violence

404-688-9436 (24-hour crisis line)

404-370-7670 (Community Office)

<https://www.wrcdv.org/>

Agency offers temporary housing, legal advocacy and support groups.

HOPE Atlanta
404-817-7070

www.hopeatlanta.org

Assistance with housing, homeless prevention and relocation for women fleeing abusive relationships.

The Georgia Coalition Against Domestic Violence
404-209-0280 (Office) 1-800-33-HAVEN
(1-800-334-2836) (24-hour crisis line)

<https://gcadv.org/>

Agency offers a rapid rehousing program, training for children and advocacy.

Camp Peace

<http://www.camppeaceatl.org>

The camp brings children exposed to domestic violence together for a month of activities that will help them learn alternatives to violence while promoting tolerance, impartiality, affection, self-compassion and compassion for others.

Tapestri
404-299-2185

<https://tapestri.org>

Domestic violence program for immigrants
and refugees

The National Domestic Violence Hotline

1-800-799-7233 (24-hour crisis line)

<http://www.thehotline.org/>

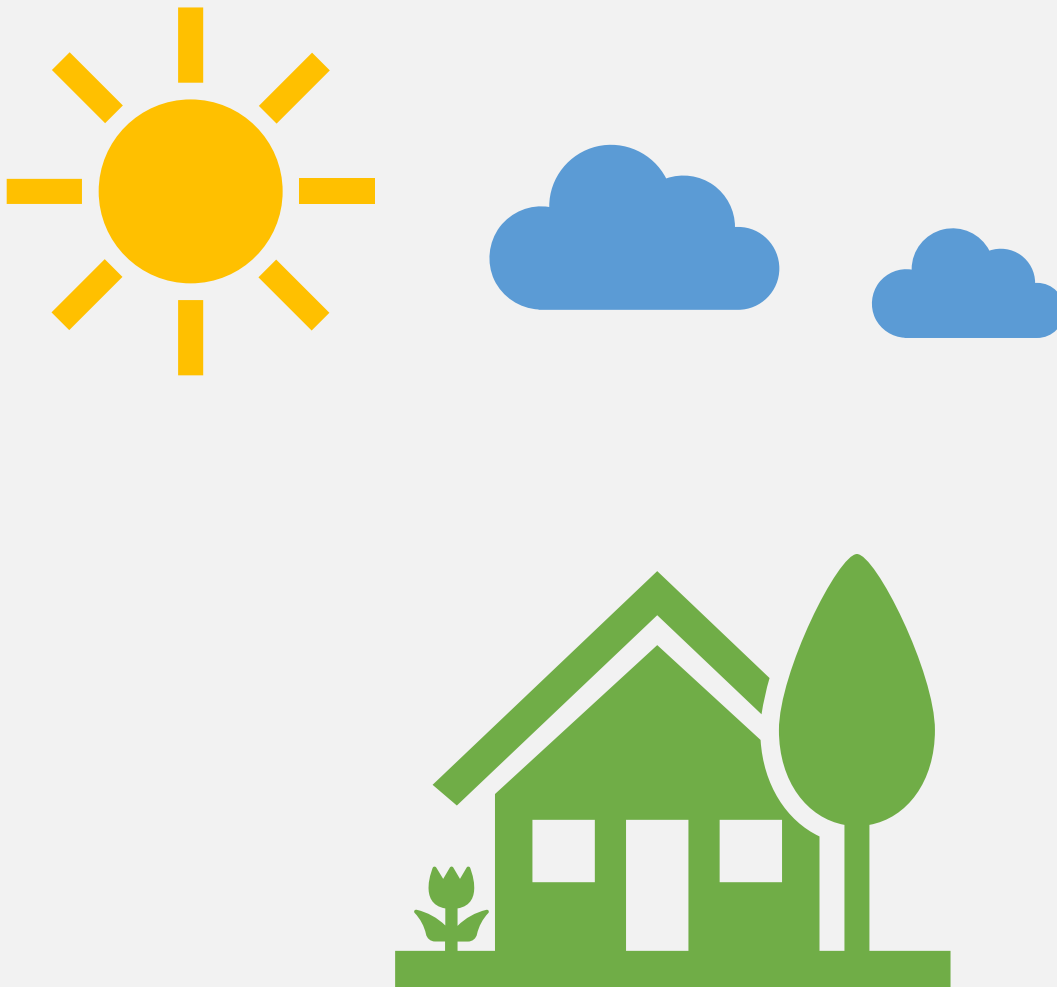
Temporary Protective Order Information

<https://www.gwinnettcourts.com/about/domestic-violence>

International Women's House

770-413-5557

Domestic Violence Shelter





FOOD

Please call the food pantries to confirm that the hours have not changed and/or that they are still in operation. Food pantries often change their hours without notification.

North Gwinnett Food Resources (Auburn, Braselton, Buford, Hoschton, Sugar Hill, Suwanee)

North Gwinnett Cooperative

4395 Commerce Drive
Buford, Georgia 30518
Phone: 770-271-9793

<https://northgwinnettcoop.org/about/>

Pantry Hours

Monday: 6-8pm
Wednesday-Friday: 10am-2pm

Exodus Outreach, Inc.

770-945-9064

251 Bona Rd., Buford, Georgia 30518

<http://www.unionbaptistchurchbuford.com/exodus-outreach-ministry>

9:30 am – 11:00 am Saturday

Lawrenceville Food Resources (Dacula, Lawrenceville)

Lawrenceville Cooperative Ministry

770-339-7887

52 Gwinnett Dr., Suite C, L'ville, GA 30046

<http://www.lawrencevilleco-op.org/>

Mon: 5- 7pm, Wed and Fri: 9am – noon

The Quinn House

770-962-0470

555 Hurricane Shoals Rd NW

Lawrenceville, GA 30046

<http://www.thequinnhouse.com>

9:00 am – 12:00 pm Tuesday-Thursday (Call beginning at 9 am to 770-962-0470 on day you need pickup to request box)

Streetwise Georgia Mobile Food Pantry

678-985-9952

1770 Cedars Road, Lawrenceville, GA 30045

<https://www.streetwisegeorgia.org/>

Second Saturday of each month

Please call to schedule an appointment or register for an event with StreetWise.
Call Monday, Tuesday or Thursday from 10:15 – 2:00 at 678-985-9952 or 678-985-9915

Duluth Food Resources (Berkeley Lake, Duluth)

Duluth Cooperative Ministry – Hands of Christ
770-623-9563

3395 Fox Street, Duluth, GA 30096

www.duluthco-op.org

10:00 am – 2:00 pm Monday, Wednesday, Friday.
Call for an appointment.

Serves residents in zip codes 30096 and 30097

CarePointe Food Pantry
678-812-4500

1800 Satellite Boulevard, Duluth, GA 30097

<http://www.crosspointechurch.com/carepointe>

9:30 am – 12:30 pm Wednesday, Saturday

Lilburn Food Resources (Lilburn, Stone Mountain, Tucker)

Lilburn Cooperative Ministry
770-931-8333

5329 Five Forks Trickum Road, Lilburn, GA 30047

<http://lilburncoop.org/>

10:00 am – 2:00 pm Monday, Wednesday, Friday
(last food order is taken at 1:30pm)

Stone Mountain Cooperative Ministry
770-879-5977

5324 West Mountain Street
Stone Mountain, GA. 30086

<https://www.stonemtncoop.org/>

Monday and Wednesday: 10 a.m. - 1:30 p.m.
Friday: 10 a.m. - 12 p.m.

Norcross Food Resources (Doraville, Norcross, Peachtree Corners)

Norcross Cooperative Ministry

770-263-8268 or 770-263-0013

2275 Mitchell Rd. Norcross, GA 30071

<http://www.norcrossco-op.org/>

10:00 am – 2:00 pm Monday, Wednesday, Friday,
Saturday; 6:00 pm – 8:00 pm Tuesday

Offers services to families living in Norcross,
Peachtree Corners, Doraville and Tucker of
Gwinnett County, GA only.

**City of Hope Community
Outreach Ministry, Inc.**

770-441-2948

182 Hunter St., Norcross, GA 30071

<http://www.hmbchurch.net>

10:30 am – 1:30 pm Tuesday - Thursday

Southeast Gwinnett Food Resources (Grayson, Loganville, Snellville)

Southeast Cooperative Ministry
770-985-5229

55 Grayson Industrial Pkwy
Grayson, GA 30017

<http://segwinnettcoop.org/>

Monday 5:00 – 7:30 pm,
Wednesday and Friday 9 am - noon

Impact Community Food Pantry
770-979-7079

3594 Centerville Hwy, Snellville, GA 30039

<https://www.impactgwinnett.com/pantry>

Food Pantry Hours: Thursday and Saturday 9:30 –
11:30 am, Walk-ins Welcome

General Food Resources

Food Finder GA
770-527-2181

<http://www.foodfinderga.org/>

Online service to locate food resources around
Gwinnett County.

St. Vincent de Paul Society of Georgia
678-892-6163

<http://www.svdpatl.org/>

Life Tools Community Development Corp
770-217-0729

9633 Hwy 5, Douglasville, GA 30135

<http://www.thepantrydc.com/>

9:00 am – 11:30 am Saturday

Food Pantry: Anyone can come.

Warehouse of Hope
770-489-0509

100 Hunter Road, Douglasville, GA 30134

<http://warehouseofhope.squarespace.com>

Please call for days and hours of operation as
these are changing with Covid changes. In addition
to human food assistance, they also run a pet food
bank.

Hunger Hotline

1-866-3-HUNGRY (1-866-348-6479) or

1-877-8-HAMBRE (for Spanish)

from Monday through Friday, 7 a.m. to 10 p.m. ET.

The National Hunger Hotline staff connects callers with emergency food providers in their community,
government assistance programs, and various social services.





EMPLOYMENT

Jewish Family and Career Services

4549 Chamblee Dunwoody Road
Atlanta, GA 30338
info@jfcsatl.org
770-677-9300

Services include aging and older adults, career counseling, dentistry, mental health, intellectual and developmental disabilities, and need-based support.

Atlanta Center for Self-Sufficiency

404-874-8001
18 William Holmes Borders Senior Dr NE
Atlanta, GA 30312
<https://atlantacss.org/>

ACSS provides workforce readiness, job placement, and life stabilization services to homeless and financially vulnerable men and women, including veterans, to empower them to reach their goals for self-sufficiency.

Georgia Department of Labor (Norcross)

[770\) 840-2200](tel:7708402200)
2211 Beaver Ruin Rd STE 160
Norcross, GA 30071



LEGAL

Georgia Legal Aid

<https://www.georgialegalaid.org/>

State support and technical assistance center for civil legal pro bono programs, civil legal services, and local voluntary bar associations.

Asian Americans Advancing Justice

404-585-8446
5680 Oakbrook Parkway, Suite 148
Norcross, GA 30093
<http://advancingjustice-atlanta.org>

Offers impact litigation, legal services, policy advocacy, civic, engagement, and leadership development.

Temporary Protective Order Information

<https://www.gwinnettcourts.com/about/domestic-violence>

Catholic Charities of the Archdiocese of Atlanta, Inc.

678-222-3920
<https://catholiccharitiesatlanta.org>

Georgia Asylum and Immigration Network (GAIN)

678-335-6040

<https://georgiaasylum.org>

Provides free immigration legal services to victims of crime and persecution.

Immigrant Legal Resource Center

www.ilrc.org

National nonprofit resource center that provides immigration legal trainings, technical assistance, and educational materials, and engages in advocacy and immigrant civic engagement to advance immigrant rights.

Does not provide direct legal services or individual legal consultations

Kuck Baxter Immigration Partners

404-816-8611

<https://www.immigration.net>

Provides employment based and family-based immigration legal services

Latin American Association

678-205-1018 / 770-910-7660

308 North Clayton St., Lawrenceville, GA 30046

<https://thelaa.org>

Offer Latino families immigration legal services, English classes, emergency assistance and computer literacy courses in Spanish

Musings on Immigration

<http://musingsonimmigration.blogspot.com/>

Blog from immigration lawyers about issues related to immigration, updated bilingual legal info and resources

Crime Victims Advocacy Council

770-333-9254, line 1

<https://cvaconline.org/how-we-help/>

Dedicated to preventing crime and assisting crime victims and their families and communities in Georgia through crisis intervention, support groups, assistance in filing victim's compensation, education regarding the criminal justice system, and more.

Georgia Law Center for the Homeless

404-681-0680

100 Edgewood Ave., N.E. Suite 1625

Atlanta, GA 30303

www.galawcenter.org

The Georgia Law Center for the Homeless is a non-profit providing quality civil legal services and court representation to homeless clients. Practice family law, landlord and tenant law, social security benefits and probate law.





MULTI-CULTURAL RESOURCES

Asian American

CPACS (Center for Pan Asian Community Services)

Provides employment, immigration, parenting, legal, domestic violence referrals and medical assistance (preventative health care, school health immunizations and screenings, and dental care. Medicaid and Medicare accepted. Multiple languages available.

Main office
3510 Shallowford Rd
Atlanta, GA 30341
770-936-0969

CPACS COSMO Health Center
6185 Buford Hwy # G100
Norcross, GA 30071
770-446-0929

CPACS COSMO Dental
6185 Buford Hwy # A1
Norcross, GA 30071
770-674-7980

Gwinnett Center
4405 International Blvd NW Suite C-101
Norcross, GA 30093
770-232-5200

Good Shepherd Services –

Chinese, Korean & Vietnamese Community
(Provides English counseling, cultural assistance/
emergency shelter, employment,
legal & childcare for refugee & immigrant
women)
770-455-9379

Asian American Resource Center

770-270-0663
3635 Peachtree Industrial Blvd #450
Duluth, GA 30096
Multi-lingual counseling service provider and rapid
re-housing assistance

Asian Americans Advancing Justice

404-585-8446
5680 Oakbrook Parkway, Suite 148
Norcross, GA 30093
<http://advancingjustice-atlanta.org>
Offers impact litigation, legal services, policy
advocacy, civic, engagement, and leadership
development.

The Road to Recovery

Provides domestic violence & alcohol/drug
counseling and bi-lingual services for Spanish &
Korean communities
770-220-2885

Raksha

Southeast Asian Community
Provides legal, immigrant, family violence
and senior citizen assistance
404-842-0725

Latin American Association

678-205-1018 / 770-910-7660

308 North Clayton St., Lawrenceville, GA 30046

<https://thelaa.org>

Offer Latino families immigration legal services, English classes, emergency assistance and computer literacy courses in Spanish

Clinic for Education, Treatment and Prevention of Addiction, Inc. (CEPTA)

Now ViewPoint Health

VIRTUAL

6020 Dawson Blvd, #1, Norcross, GA 30093

Counseling mental health

Fees based on family income

770-449-5259 or 770-558-8754

Ser Familia

678-363-3079, IN PERSON

2755 Sawnee Avenue, Buford, GA 30518

Multi-lingual counseling service provider

Angel Lopez Associates

770-232-0555, VIRTUAL

2250 Satellite Blvd Ste 175

Duluth, GA 30097

Multi-lingual counseling service provider

Cruse Medical Care

678-377-1108, IN PERSON

1844 Old Norcross Rd Lawrenceville, GA 30044

Psychiatrist who takes MA, interpreters

Caminar Latino

404-413-6348

Domestic violence support for women, youth and men, serving Latino families

www.caminarlatino.org

Centro Prenatal De Gwinnett

(Gwinnett Prenatal Center)

770-227-0230

575 W. Pike St. Suite 1

Lawrenceville, GA 30046

Clinica de la Mama

770-613-0670

5050 Jimmy Carter Blvd., Norcross GA 30093

Prenatal health center. Will work with undocumented individuals in developing a payment plan.

The Road to Recovery

Provides domestic violence & alcohol/drug counseling and bi-lingual services for Spanish & Korean communities

770-220-2885

Families First

404-853-2844 , VIRTUAL

5360 Old Norcross Rd, Norcross 30071

Sliding scale, No MA.

Immigrant/Refugee

New American Pathways

(Refugee family services)

(Provides English, parenting, employment, immunization services; workshops for women & children from Bosnia and former Yugoslavia)

404-299-6099

Good Shepherd Services –

Chinese, Korean & Vietnamese Community
(Provides English counseling, cultural assistance/
emergency shelter, employment,
legal & childcare for refugee & immigrant
women/Chamblee)
770-455-9379

Immigrant Legal Resource Center

www.ilrc.org

National nonprofit resource center that provides immigration legal trainings, technical assistance, and educational materials, and engages in advocacy and immigrant civic engagement to advance immigrant rights.

Does not provide direct legal services or individual legal consultations

International Women’s Health Services (CIMA)

678-672-4645

5161 Brook Hollow Pkwy., Suite 200
Norcross, GA 30071

info@cimasalud.net

Monday-Friday 9:00 am – 5:00 pm

International Women’s House

770-413-5557

Domestic Violence Shelter





MULTI-RESOURCE AGENCIES

Gwinnett Cares
770-995-3339

<https://gwinnettcare.org/need-help/helpline/>

Offers information and referral services to agencies addressing a wide variety of needs: food, clothing, housing, utility and rent assistance, healthcare, employment, counseling, legal aid, and more.

OneStop 4 HELP
770-822-8850

OneStopHelp@GwinnettCounty.com

GwinnettOneStop.com

The program helps with employment, food, shelter, legal consultation, mental and behavioral health, substance use, transportation, utilities and other issues

United Way 2-1-1

<http://211online.unitedwayatlanta.org/>

Database to assist residents with food, clothing, utilities, shelter, employment, education and training resources, prescription assistance, medical and more.

Jewish Family and Career Services

4549 Chamblee Dunwoody Road
Atlanta, GA 30338

info@jfcsatl.org

770-677-9300

Services include aging and older adults, career counseling, dentistry, mental health, intellectual and developmental disabilities, and need-based support.

Gwinnett County Division of Family and Children Services

Lawrenceville Office

678-518-5500

<https://dfcs.georgia.gov/about-us>

95 Constitution Blvd, Lawrenceville, GA 30046

The Georgia Division of Family & Children Services (DFCS) investigates reports of child abuse; finds foster and adoptive homes for abused and neglected children; issues SNAP, Medicaid and TANF; helps out-of-work parents get back on their feet; and provides numerous support services and innovative programs to help families in need.



HOTLINES

National Suicide Hotline

1-800-784-2433

www.findahotline.com

That's Not Cool (for teens)

1-866-331-9474

www.thatsnotcool.com www.loveisrespect.org

Site directed towards teens about the pressures of intimate violence, abuse, harassment and other relationship issues.

Gwinnett Sexual Assault Center

770-497-9122

24 Hour Crisis Line: 866-900-6019

P.O.Box 1329 Duluth, GA 30096

www.mosaicgeorgia.org

Child Abuse and Neglect

Department of Family and Children Services

1-855-422-4453

A report can be made 24 hours a day and 7 days a week.

