

# Accountability Report

Issued 2018–19

## Shiloh Middle School

Dr. Tereka Williams, *Principal*

Peggy Goodman, *Assistant Superintendent*



### Local school improvement connected to district's strategic direction

Gwinnett County Public Schools' accountability system for improving schools is called the Results-Based Evaluation System (RBES). RBES fairly and systematically measures a school's progress, providing a process that clearly communicates expectations; reviews, monitors, and supports school performance; and evaluates that performance. This report reflects achievement data and state data reporting from the 2017–18 school year, as well as consolidated information on the school's effectiveness, based on multiple measures and student characteristics. Using the data in this report, school administrators, teachers, and parent advisory groups developed

this year's Local School Plans for Improvement (LSPI) which outline our improvement goals and guide the work we will do throughout the 2018–19 school year to support student learning. These improvement plans are connected to the school district's strategic direction and our core business of teaching and learning. Find our school's LSPI on the website. The Shiloh school council and school leaders collaborated on the highlights in this accountability report, which also serves as the school's annual report.

**Please review this report to learn more about our improvement efforts and progress.**

### CONTENTS

About School Improvement and the School Effect

2017–18 Results

2017–18 State Reporting

2017–18 Highlights

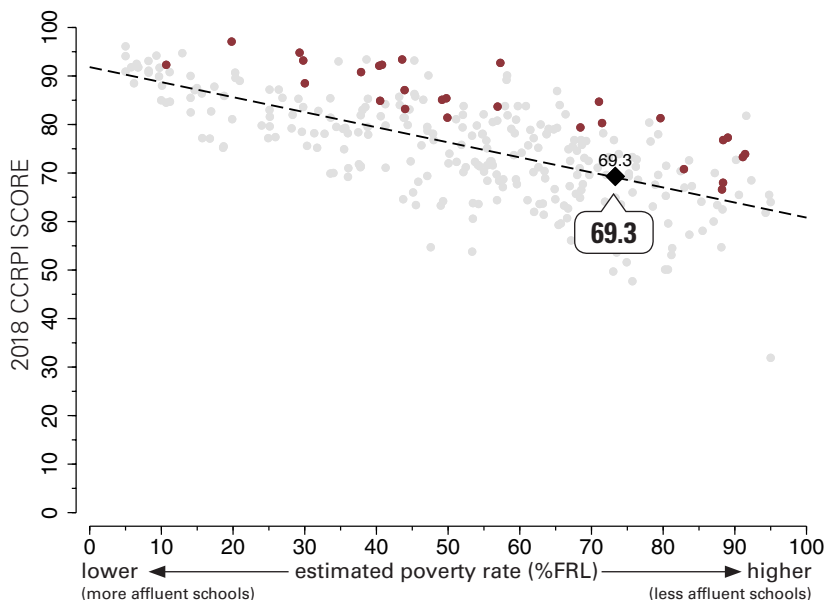


### The School Effect: Putting Shiloh Middle School's CCRPI score in context

The “school effect”—the impact of what happens in the classroom—acknowledges the work of our faculty and staff in meeting our students where they are academically, and helping them to make progress, no matter where they start. Schools all strive to add value to a child's education from year-to-year, causing students to make academic gains. One way to measure effectiveness in educating *all* students is to review a school's score on Georgia's College and Career Ready Performance Index (CCRPI), adjusting for the level of poverty at the school, to see the school effect on students' academic growth.

This graphic representation plots CCRPI scores for middle schools in the state (gray dots) against the percentage of the student population receiving free-and-reduced-lunch (FRL Percentage), a measure of poverty. The plotted points form a trend line representing the typical achievement level of a school in Georgia with its level of student poverty. The graph shows how Shiloh (represented by a large black diamond) and all GCPS middle schools (maroon dots) fare when considering expected performance based on poverty measures. Dots above the line are higher-than-expected scores and dots below the line reflect lower-than-expected scores.

*Note: Georgia schools that serve breakfast and lunch to all students at no cost are not included in this comparison.*



## 2017–18 Results: Georgia Milestones Assessment System

### Georgia Milestones for Grades 6, 7, and 8

Last spring, Gwinnett students joined students across Georgia in taking state assessments called Georgia Milestones. This comprehensive assessment system measures how well students have learned the knowledge and skills outlined in the state-adopted content standards.

In April and May of 2018, students in grades 3 through 8 took an End of Grade (EOG) assessment in English language arts and mathematics while students in grades 5 and 8 also were assessed in science and social studies.

8th graders enrolled in high school mathematics and science courses— Algebra I, Physical Science, and Biology— take an End-of-Course (EOC) assessment instead of taking the math and science EOG assessments.

The higher bar for student proficiency set by Georgia Milestones is aimed at better preparing students for college and career and providing a more realistic picture of academic progress.

To learn more about Georgia Milestones, visit [testing.gadoe.org](http://testing.gadoe.org) and click on Georgia Milestones Assessment System.

About Milestones Achievement Levels
The Milestones results are reported using four categories of achievement, described below. In previous state tests, achievement was reported in three categories (Does Not Meet, Meets, and Exceeds). Under the new system of reporting, proficiency is the target. The tables on this page show the percentage of students who achieved at the level of <b>Proficient Learner</b> or higher. Students who achieve at the Developing Learner or Beginning Learner need additional academic support to succeed at the next grade level.
<b>Distinguished Learner:</b> Student demonstrates advanced proficiency, and is <b>well prepared for the next grade level</b> and for college and career readiness.
<b>Proficient Learner:</b> Student demonstrates proficiency, and is <b>prepared for the next grade level</b> and considered to be on track for college and career readiness.
<b>Developing Learner:</b> Student demonstrates partial proficiency, and <b>needs additional academic support</b> to ensure success in the next grade level.
<b>Beginning Learner:</b> Student does not yet demonstrate proficiency, and <b>needs substantial academic support</b> to be prepared for the next grade. (In the future, when these assessments are used to determine promotion, students in this level will not be promoted to the next grade.)

### English Language Arts

Grade	Shiloh	GCPS	State
6th	36.4	49.6	38.9
7th	40.9	50.7	37.7
8th	46.9	56.1	42.8

### Science

Grade	Shiloh	GCPS	State
8th	25.4	49.9	39.0

### Mathematics

Grade	Shiloh	GCPS	State
6th	33.7	53.3	38.2
7th	38.8	55.7	41.8
8th	23.3	48.3	41.6

### Social Studies

Grade	Shiloh	GCPS	State
8th	34.5	57.9	39.1

The tables on this page show the percentage of students who achieved at the level of Proficient Learner or higher. At Shiloh Middle, Milestones results for 8th Grade Math and Science are based on a combination of EOG and High School End-of-Course (EOC) results.

## 2017–18 Results: Norm-referenced Assessments: PSAT 8/9

Gwinnett’s 8th graders have an early opportunity to set their course for college and careers with the PSAT 8/9, a test that helps determine what students need to work on most so that they are ready for college when they graduate from high school.

The PSAT 8/9 is part of the College Board family of assessments that includes the SAT college-admission assessment and the PSAT/NMSQT, a preview of the SAT. The PSAT 8/9 tests the same skills and knowledge as the SAT and PSAT/NMSQT, but in a way that makes sense for 8th graders. The test focuses on the skills and knowledge at the heart of education— what students have been learning in school and what they’ll need to succeed in college— in the areas of mathematics and evidence-based reading and writing.

The PSAT 8/9 establishes a baseline measurement of college and career readiness as students enter high school. It also gives students a chance to preview the SAT and the PSAT/NMSQT. (Gwinnett 10th graders take the PSAT/NMSQT.)

	Math	Reading/Writing
Shiloh	395	379
GCPS	429	416
State	411	413
National	400	405

## State Reporting: Georgia's 2017–18 College and Career Ready Performance Index (CCRPI)

The College and Career Ready Performance Index (CCRPI) is the state's accountability system. Redesigned in 2017–18, it assesses how well students are prepared for college and careers and ensures that schools are focused on improving achievement among all students. The CCRPI recognizes a school's levels of student test performance as well as those students' improvements in performance across years and the school's progress in closing achievement gaps with traditionally underserved subgroups of students.

Schools earn CCRPI points based on indicators that vary by grade and school level and align with measures of college- and career-readiness. For 2017–18, middle schools earned up to a set number of points in four main categories, for a total of 100 possible points. Here are the factors considered in awarding points at the middle school level in each category:

- **Content Mastery points** increase with greater percentages of students performing at high levels on the state's End of Grade (EOG) and End of Course (EOC) assessments.
- **Progress points** are tied to the level of academic progress students make from year to year.
- **Closing Gap points** are earned as schools work to close the gaps between different groups of students, including students learning English, students living in poverty, and students with disabilities.
- **Readiness points** take into account factors that have an impact on students' readiness for the next grade and school level, including reading ability associated with college- and career-readiness, attendance, and participation in enrichment courses, including fine arts, world languages, physical education/health, and career exploratory.

	Shiloh	GCPS	State
<b>CCRPI Total Score (out of 100 possible points)</b>	<b>69.3</b>	<b>84.5</b>	<b>76.2</b>
Content Mastery (30% of total)	59.4	78.2	65.1
Progress (35% of total)	87.5	88.6	81.0
Closing Gap (15% of total)	25.0	82.5	78.8
Readiness (20% of total)	85.6	88.1	82.4

*All CCRPI scores are out of 100 possible points. The Total Score is made up of four weighted subscores, each accounting for a percentage of the total score. The calculation for Shiloh MS's Total Score of 69.3 is 30% of 59.4 + 35% of 87.5 + 15% of 25.0 + 20% of 85.6.*

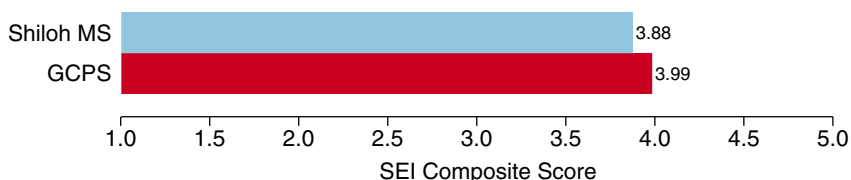
## Star Ratings

Under CCRPI, schools are awarded star ratings in two areas— school climate and financial efficiency— using a five-star scale.

- **The School Climate rating** takes into account discipline and attendance data as well as perceptions of the quality and character of the school and its learning environment. Shiloh was awarded a School Climate star rating of ★★★★★.
- **The Financial Efficiency rating** is a measure that compares a school's spending per student to the overall academic performance of its students. The School Financial Efficiency ratings for 2017–18 were not published at the time 2018 CCRPI results were released in the fall. Once available, parents can find them here: <http://www.gadoe.org/CCRPI/Pages/default.aspx>.

## Student Engagement

The Student Engagement Instrument (SEI) is a survey used to measure how engaged students are at school and with learning. When taking the SEI, students respond to items that cover a variety of topics related to their engagement in their education, including the level of support they receive from teachers, peers, and family, as well as their perceptions of school work and future educational goals. We measure student engagement at GCPS because it is related to important outcomes such as on-time graduation and postsecondary success. The bar graph below shows the average SEI Composite Score— a summary of a student's responses across all items on the SEI— for Shiloh Middle School compared with an average of results for all GCPS middle schools. The Composite Score can range from 1.0 to 5.0, with higher scores reflecting stronger student engagement.



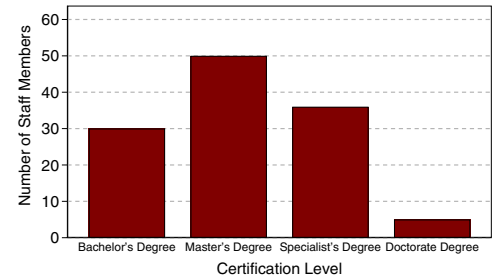
# Shiloh Middle School

## Other 2017–18 Highlights...

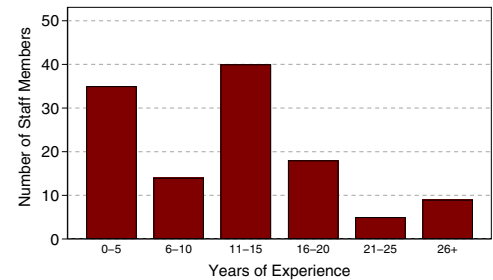
- Shiloh Middle School’s Robotics Team participated in the FIRST LEGO League Competition and won 1st place in Robot Design.
- 8th grade students in Shiloh Middle School’s Junior Leadership Corps (JLC) participated in a Toastmaster’s speaking competition. Three students advanced to compete Georgia Toastmasters state finals in Alpharetta. JLC cadets competed and placed in the first-ever Academic Challenge Competition. Shiloh’s JLC has helped model effective JLC organization, development, and performance for six academy schools in the cities of Atlanta and Thomasville and in Clarke and Muscogee counties.
- Two of our Science Fair teams advanced to the Georgia Science & Engineering Fair held in Athens.
- Eight Shiloh Middle School Band students were accepted into the Honor Band for the UGA Middle School Band Festival (MidFest). Our 6th Grade Band and 7th/8th Grade Band performed at Large Group Performance Evaluations, earning an Excellent rating in Stage Performance and a Superior in Sight Reading. Ten students were nominated to Gwinnett’s First Year Honor Band.
- Shiloh Middle School Chorus students were selected for the District 13 Honor Chorus. SMS Chorus participated in the “Sounds of the Season” Concert Series at the Mall of Georgia and the Gwinnett Justice and Administration Center. SMS Chorus shared music in community venues throughout the school year.
- SMS Fine Arts students attended and performed at various Music Workshops at the Walt Disney World Resort in Orlando.
- Out of 70 participating schools, Shiloh’s Boys Track Team placed 2nd in state competition. Our Girls Track Team placed 10th. Shiloh’s Boys Basketball Team won the County Championship for the 2017–18 school year.
- Shiloh Middle School promoted positive Family-Community-School partnerships by offering Parent Observation Days where more than 200 parents visited classrooms throughout the school day to gain insight into the requirements of the academic day for students at Shiloh Middle School.
- Shiloh Middle School hosted Community Support and Impact Days designed to engage business partners in strategic conversations about how we can collaborate as a school community to promote student academic achievement and community engagement.
- Students in our Distinguished Gentlemen mentoring program participated in college tours throughout the year to increase interest in attending a college/university after high school.
- Shiloh Middle School offered parent workshops to provide access to academic resources that will help parents support their children’s academic success in the areas of Math, Literacy, and Technology.

## 2017–18 Staff Data

Staff Certification Level



Experience in Education



## Student Data (2015–16 to 2017–18)

	School Year		
	15–16	16–17	17–18
<b>Enrollment</b>	1793	1836	1846
+American Indian/Alaskan Native*	0%	0%	0%
+Asian*	2%	3%	4%
+Black/African American*	71%	71%	69%
+Hispanic or Latino, <i>any race</i>	15%	18%	19%
+Multiracial, <i>two or more races</i> *	4%	3%	3%
+Native Hawaiian/Pacific Islander*	0%	0%	0%
+White*	7%	6%	5%
Special Education	14%	15%	17%
ESOL	4%	5%	12%
Free/Reduced Lunch	74%	75%	73%
Average Attendance	96%	96%	97%

\*Not Hispanic or Latino

## School Safety Perceptions

Based on responses from those with an opinion who responded to the 2017–18 RBES Perception Survey...

- 75.6% of students agreed or strongly agreed that they felt safe at Shiloh Middle.
- 97.3% of parents agreed or strongly agreed that their child’s school was safe.

*The mission of Gwinnett County Public Schools is to pursue excellence in academic knowledge, skills, and behavior for each student, resulting in measured improvement against local, national, and world-class standards.*

### Shiloh Middle School

4285 Shiloh Road, Snellville, GA 30039  
(770) 972-3224 • <http://www.gwinnett.k12.ga.us/ShilohMS>  
Dr. Tereka Williams, Principal

### Gwinnett County Public Schools

437 Old Peachtree Rd., NW • Suwanee, GA 30024-2978  
[www.gwinnett.k12.ga.us](http://www.gwinnett.k12.ga.us)

### 2019 Gwinnett County Board of Education

Dr. Mary Kay Murphy (District III), 2019 Chairman;  
Louise Radloff (District V), 2019 Vice Chairman; Carole C. Boyce (District I);  
Steven B. Knudsen (District II); and Everton Blair, Jr. (District IV)  
J. Alvin Wilbanks, CEO/Superintendent