



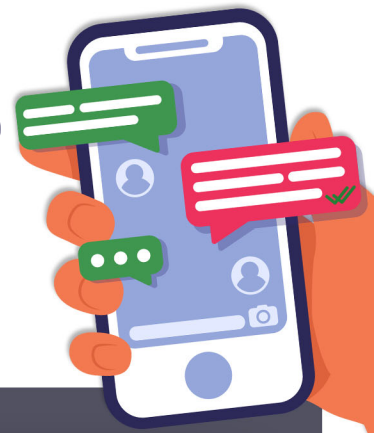
GEORGIA COVID-19

Emotional Support Line

Everyday 8am - 11pm

866-399-8938

TEXT OR CALL US



TO OUR EDUCATORS

Educators fulfill a significant responsibility. As an opportunity to support you in the work that you do caring for students, the Georgia COVID-19 Emotional Support Line is providing free and confidential assistance to educators needing emotional support or resource information as a result of the COVID-19 pandemic. You don't have to manage your emotions alone. Our mental health professionals are here to help.

A partnership between the Georgia Department of Behavioral Health and Developmental Disabilities, Beacon Health Options, and Behavioral Health Link.



Georgia
Department of
Behavioral Health
& Developmental
Disabilities

