

Accountability Report

Issued 2017–18

Lilburn Middle School

Dr. Yvette Arthur, *Principal*

Peggy Goodman, *Assistant Superintendent*



Local school improvement connected to district's strategic direction

Gwinnett County Public Schools' accountability system for improving schools is called the Results-Based Evaluation System (RBES). RBES fairly and systematically measures a school's progress, providing a process that clearly communicates expectations; reviews, monitors, and supports school performance; and evaluates that performance. This report reflects achievement data and state data reporting from the 2016–17 school year, as well as consolidated information on the school's effectiveness, based on multiple measures and student characteristics. Using the data in this report, school administrators, teachers, and parent advisory groups developed

this year's Local School Plans for Improvement (LSPI) which outline our improvement goals and guide the work we will do throughout the 2017–18 school year to support student learning. These improvement plans are connected to the school district's strategic direction and our core business of teaching and learning. Find our school's LSPI on the website. The Lilburn school council and school leaders collaborated on the highlights in this accountability report, which also serves as the school's annual report.

Please review this report to learn more about our improvement efforts and progress.

CONTENTS

About School Improvement and the School Effect

2016–17 Results

2016–17 State Reporting

2016–17 Highlights

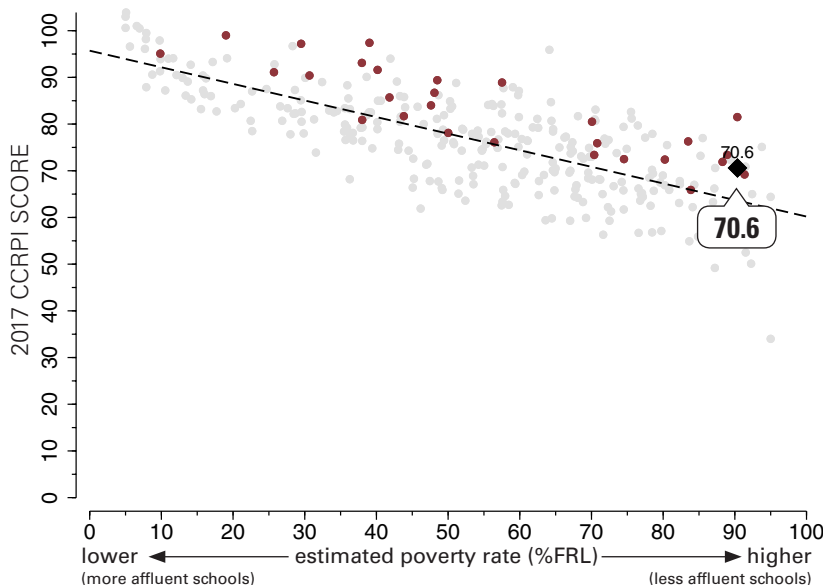


The School Effect: Putting Lilburn Middle School's CCRPI score in context

The “school effect”— the impact of what happens in the classroom— acknowledges the work of our faculty and staff in meeting our students where they are academically, and helping them to make progress, no matter where they start. Schools all strive to add value to a child's education from year-to-year, causing students to make academic gains. One way to measure effectiveness in educating *all* students is to review a school's score on Georgia's College and Career Ready Performance Index (CCRPI), adjusting for the level of poverty at the school, to see the school effect on students' academic growth.

This graphic representation plots CCRPI scores for middle schools in the state (gray dots) against the percentage of the student population receiving free-and-reduced-lunch (FRL Percentage), a measure of poverty. The plotted points form a trend line representing the typical achievement level of a school in Georgia with its level of student poverty. The graph shows how Lilburn (represented by a large black diamond) and all GCPS middle schools (maroon dots) fare when considering expected performance based on poverty measures. Dots above the line are higher-than expected scores and dots below the line reflect lower-than-expected scores.

Note: Georgia schools that serve breakfast and lunch to all students at no cost are not included in this comparison.



2016–17 Results: Georgia Milestones Assessment System

Georgia Milestones for Grades 6, 7, and 8

Last spring, Gwinnett students joined students across Georgia in taking state assessments called Georgia Milestones. This comprehensive assessment system measures how well students have learned the knowledge and skills outlined in the state-adopted content standards.

In May of 2017, students in grades 3 through 8 took an End of Grade (EOG) assessment in English language arts and mathematics while students in grades 5 and 8 also were assessed in science and social studies.

The higher bar for student proficiency set by Georgia Milestones is aimed at better preparing students for college and career and providing a more realistic picture of academic progress.

To learn more about Georgia Milestones, visit testing.gadoe.org and click on Georgia Milestones Assessment System.

About Milestones Achievement Levels

The Milestones results are reported using four categories of achievement, described below. In previous state tests, achievement was reported in three categories (Does Not Meet, Meets, and Exceeds). Under the new system of reporting, proficiency is the target.

The tables on this page show the percentage of students who achieved at the level of **Proficient Learner** or higher. Students who achieve at the Developing Learner or Beginning Learner need additional academic support to succeed at the next grade level.

Distinguished Learner: Student demonstrates advanced proficiency, and is **well prepared for the next grade level** and for college and career readiness.

Proficient Learner: Student demonstrates proficiency, and is **prepared for the next grade level** and considered to be on track for college and career readiness.

Developing Learner: Student demonstrates partial proficiency, and **needs additional academic support** to ensure success in the next grade level.

Beginning Learner: Student does not yet demonstrate proficiency, and **needs substantial academic support** to be prepared for the next grade. (In the future, when these assessments are used to determine promotion, students in this level will not be promoted to the next grade.)

English Language Arts

Grade	Lilburn	GCPS	Georgia
6th	29.9	51.3	40.3
7th	28.0	47.6	36.7
8th	24.9	51.6	42.4

Science

Grade	Lilburn	GCPS	Georgia
8th	25.9	46.8	37.8

Mathematics

Grade	Lilburn	GCPS	Georgia
6th	31.6	53.3	38.2
7th	39.6	55.7	41.8
8th	36.3	48.3	41.6

Social Studies

Grade	Lilburn	GCPS	Georgia
8th	34.1	57.9	39.1

The tables on this page show the percentage of students who achieved at the level of Proficient Learner or higher. At Lilburn Middle, Milestones results for 8th Grade Math and Science are based on a combination of EOG and High School End-of-Course (EOC) results.

2016–17 Results: Norm-referenced Assessments: PSAT 8/9

Gwinnett's 8th graders have an early opportunity to set their course for college and careers with the PSAT 8/9, a test that helps determine what students need to work on most so that they are ready for college when they graduate from high school.

New for 2016–17, the PSAT 8/9 takes the place of the Iowa Assessments for Gwinnett 8th graders. The PSAT 8/9 is part of the College Board family of assessments that includes the SAT college-admission assessment and the PSAT/NMSQT, a preview of the SAT. The PSAT 8/9 tests the same skills and knowledge as the SAT and PSAT/NMSQT, but in a way that makes sense for 8th graders. The test focuses on the skills and knowledge at the heart of education—what students have been learning in school and what they'll need to succeed in college—in the areas of mathematics and evidence-based reading and writing.

The PSAT 8/9 establishes a baseline measurement of college and career readiness as students enter high school. It also gives students a chance to preview the SAT and the PSAT/NMSQT. (Gwinnett 10th graders take the PSAT/NMSQT.) When students receive their test results, they can connect their College Board and Khan Academy® accounts to get free personalized study recommendations. Students who take any test in the SAT Suite of Assessments, including the PSAT 8/9, have access to video lessons and personalized SAT study resources based on their test results. Their Khan Academy® practice experience is tailored to meet their individual needs as they prepare for College Board assessments in high school.

	Math	Reading/Writing
Lilburn	402	383
GCPS	434	419
Georgia	419	420
National	407	407

State Reporting: Georgia’s 2016–17 College and Career Ready Performance Index (CCRPI)

College and Career Ready Performance Index (CCRPI) is Georgia’s statewide accountability system. CCRPI assesses how well students are prepared for college and careers and ensures that schools are focused on improving achievement among all students.

The index measures progress on accountability indicators such as content mastery, student attendance, and preparation for the next school level. Schools earn CCRPI points based on indicators that vary by grade and school level and align with measures of college- and career-readiness. For 2016–17, schools may earn up to a set number of points in three main categories (achievement, progress, and achievement gap), for a total of 100 possible points, with an additional 10 possible challenge points.

At the middle school level, schools earn CCRPI achievement points tied to a number of factors, including the percentages of students meeting or exceeding standards on state assessments, the percentage of students reading at grade level, the percentage of students missing six or fewer days during the school year, the percentage of students learning English who are making academic progress, the percentage of students with disabilities who participate in the general education setting, and the percentage of students scoring in the Proficient Learner or Distinguished Learner achievement levels on the Georgia Milestones assessment.

Progress points are tied to the level of academic progress students make from year to year, while achievement gap points are earned as schools work to close the gaps between student subgroups. Challenge points reflect a school’s participation levels and achievement results for students with economic disadvantages (ED), English learners (EL), and students with disabilities (SWD).

In addition, schools may earn challenge points when they “exceed the bar” for participation levels in advanced classes, world languages, fine arts, and career awareness. Schools in which teachers use data for planning individualized instruction and those with STEM certification may earn extra points as well. Innovative practices with demonstrated achievement gains as well as interventions that result in a positive school climate also may earn challenge points.

	Lilburn	GCPS	Georgia
CCRPI Total Score (out of 110 possible points)	70.6	80.9	73.0
Achievement Points (out of 50)	27.3	35.1	31.1
Progress Points (out of 40)	34.0	37.1	35.2
Achievement Gap Points (out of 10)	6.7	6.7	6.7
Challenge Points (out of 10)			
ED/EL/SWD Performance– 1.6	2.6	2.0	0.0
Exceeding the Bar– 1.0			
<i>CCRPI Total Score is the sum of points in gray shaded cells.</i>			

Star Ratings

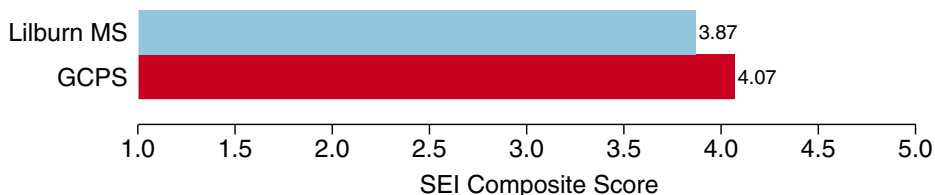
Under CCRPI, schools are awarded star ratings in two areas— school climate and financial efficiency— using on a five-star scale. Ratings range from a half-star to five stars.

- **The School Climate rating** takes into account discipline and attendance data as well as perceptions of the quality and character of the school and its learning environment.
- **The Financial Efficiency rating** is a measure that compares a school’s spending per student to the overall academic performance of its students. The rating is calculated using three-year averages of spending and CCRPI scores.

The School Climate and Financial Efficiency ratings for 2016–17 were not published at the time 2017 CCRPI results were released in fall. Once available, parents can find them here: <http://www.gadoe.org/CCRPI/Pages/default.aspx>

Student Engagement

The Student Engagement Instrument (SEI) is a survey used to measure how engaged students are at school and with learning. When taking the SEI, students respond to items that cover a variety of topics related to their engagement in their education, including the level of support they receive from teachers, peers, and family, as well as their perceptions of school work and future educational goals. We measure student engagement at GCPS because it is related to important outcomes such as on-time graduation and postsecondary success. The bar graph below shows the average SEI Composite Score—a summary of a student’s responses across all items on the SEI— for Lilburn Middle School compared with results for all GCPS middle schools. The Composite Score can range from 1.0 to 5.0, with higher scores reflecting stronger student engagement.



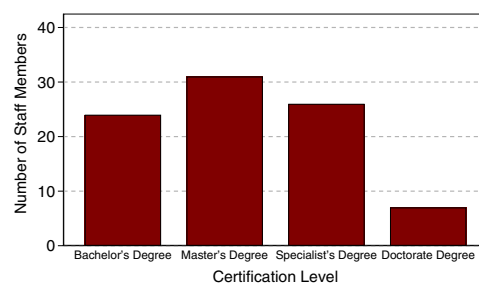
Lilburn Middle School

Other 2016–17 Highlights...

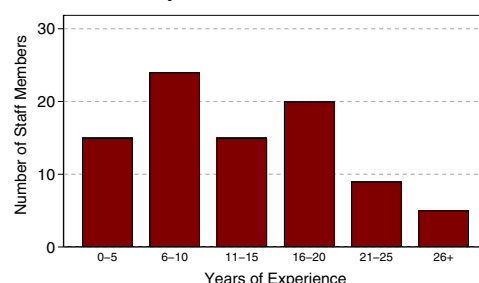
- Five 7th graders from Lilburn Middle School were selected to participate in C5 Atlanta, supported by the C5 Georgia Youth Foundation. C5 Atlanta is a youth development program that prepares at-risk students for success in their community. The foundation works to close the gap between income and achievement for Georgia students by transforming the lives of high-potential teens from challenged environments, empowering them to lead themselves and their communities.
- The Lilburn Middle School Robotics Team participated in the FIRST LEGO League Robotics Competition held at Meadowcreek High School.
- More than 130 students enrolled in our Junior Leadership Corps, an exciting leadership development program.
- Several students represented our school at the 39th annual Gwinnett Science, Engineering + Innovation Fair. One of our 7th grade students advanced to the Georgia Science & Engineering Fair.
- The Lilburn Middle School National Junior Beta Club inducted 21 students during the 2016–17 school year.
- The Lilburn Middle School Gear Up for Success program served overage 8th grade students, providing an accelerated curriculum and additional support so that 68 students could earn credit for both 8th and 9th grade classes in one year and rejoin their peers on grade level as high school sophomores and back on track for on-time graduation.
- A group of 45 students attended the 16th annual Latino Youth Leadership Conference at Georgia State University. This conference works to build leadership among our youth and strengthens rapport among school faculty, students, and families.
- During the 2016–17 school year, an 8th grade percussionist qualified for the District 13 Band.
- Lilburn Middle was recognized as a Taking Action Green & Healthy School in the Environmental Achievement Awards sponsored by Gwinnett Clean & Beautiful.
- Based on End of Course assessment results for Algebra I, a high school course, the percentage of 8th graders achieving at the “Proficient” level increased by 8 percentage points and the percentage achieving at the “Distinguished” level increased by 11 points.
- Lilburn Middle School offers a number of academic services, extended learning opportunities, and clubs, including Mustang Mentoring, Extended Learning Time focusing on content-area literacy and critical thinking, PROBE (gifted education), Robotics, Step Team, Band, Chorus, Orchestra, Theater Arts, Intramurals, Cheerleading, Soccer, Softball, and Basketball.

2016–17 Staff Data

Staff Certification Level



Experience in Education



Student Data (2014–15 to 2016–17)

	School Year		
	14–15	15–16	16–17
Enrollment	1790	1555	1606
+American Indian/Alaskan Native*	0%	0%	0%
+Asian*	8%	9%	10%
+Black/African American*	19%	17%	16%
+Hispanic or Latino, <i>any race</i>	68%	69%	70%
+Multiracial, <i>two or more races</i> *	2%	2%	0%
+Native Hawaiian/Pacific Islander*	0%	0%	0%
+White*	3%	3%	3%
Special Education	14%	13%	11%
ESOL	26%	23%	25%
Free/Reduced Lunch	90%	92%	90%
Average Attendance	95%	96%	96%

*Not Hispanic or Latino

School Safety Perceptions

Based on responses from those with an opinion who responded to the 2016–17 RBES Perception Survey...

- 79.4% of students agreed or strongly agreed that they felt safe at Lilburn Middle.
- 91.7% of parents agreed or strongly agreed that their child’s school was safe.

The mission of Gwinnett County Public Schools is to pursue excellence in academic knowledge, skills, and behavior for each student, resulting in measured improvement against local, national, and world-class standards.

Lilburn Middle School

4994 Lawrenceville Highway, Lilburn, GA 30047
(770) 921-1776 • <http://lilburnmiddle.com>
Dr. Yvette Arthur, Principal

Gwinnett County Public Schools

437 Old Peachtree Rd., NW • Suwanee, GA 30024-2978
www.gwinnett.k12.ga.us

2017 Gwinnett County Board of Education

Louise Radloff, 2017 Chairman;
Carole C. Boyce, 2017 Vice Chairman;
Dr. Robert McClure; Dr. Mary Kay Murphy; and Daniel D. Seckinger
J. Alvin Wilbanks, CEO/Superintendent